

Product datasheet for **AP55861PU-S**

PKC beta 1 (PRKCB) pSer661 Rabbit Polyclonal Antibody

Product data:

Product Type:	Primary Antibodies
Applications:	WB
Recommended Dilution:	Western blot: 1:500~1:1000.
Reactivity:	Human, Mouse, Rat
Host:	Rabbit
Clonality:	Polyclonal
Immunogen:	Peptide sequence around phosphorylation site of serine 661 (G-F-S(p)-Y-T) derived from Human PKCB (KLH-conjugated)
Specificity:	The antibody detects endogenous level of PKCB only when phosphorylated at serine 661.
Formulation:	Rabbit IgG in phosphate buffered saline (without Mg ²⁺ and Ca ²⁺), pH 7.4, 150mM NaCl, 0.02% sodium azide and 50% glycerol State: Aff - Purified State: Liquid Ig fraction
Concentration:	lot specific
Purification:	Affinity chromatography using epitope-specific peptide
Conjugation:	Unconjugated
Storage:	Upon receipt, store undiluted (in aliquots) at -20°C. Avoid repeated freezing and thawing.
Stability:	Shelf life: one year from despatch.
Predicted Protein Size:	77 kDa
Gene Name:	protein kinase C beta
Database Link:	Entrez Gene 5579 Human P05771



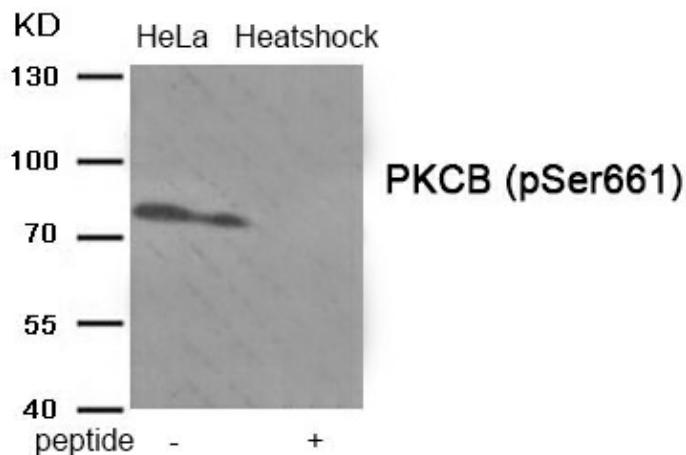
[View online »](#)

Background:

Calcium-activated, phospholipid- and diacylglycerol (DAG)-dependent serine/threonine-protein kinase involved in various cellular processes such as regulation of the B-cell receptor (BCR) signalosome, oxidative stress-induced apoptosis, androgen receptor-dependent transcription regulation, insulin signaling and endothelial cells proliferation. Plays a key role in B-cell activation by regulating BCR-induced NF-kappa-B activation. Phosphorylation induces CARD11/CARMA1 association with lipid rafts and recruitment of the BCL10-MALT1 complex as well as MAP3K7/TAK1, which then activates IKK complex, resulting in nuclear translocation and activation of NFKB1.

Synonyms:

PKC-beta, PKC beta, PKC-B, PKCB, PRKCB1, Protein kinase C beta type

Product images:

Western blot analysis of extracts from HeLa cells treated with Heatshock using Phospho-PKCB (Ser661) Antibody. The lane on the right is treated with the antigen-specific peptide.