

## Product datasheet for **AP55859PU-N**

### Her2 (ERBB2) pTyr1112 Rabbit Polyclonal Antibody

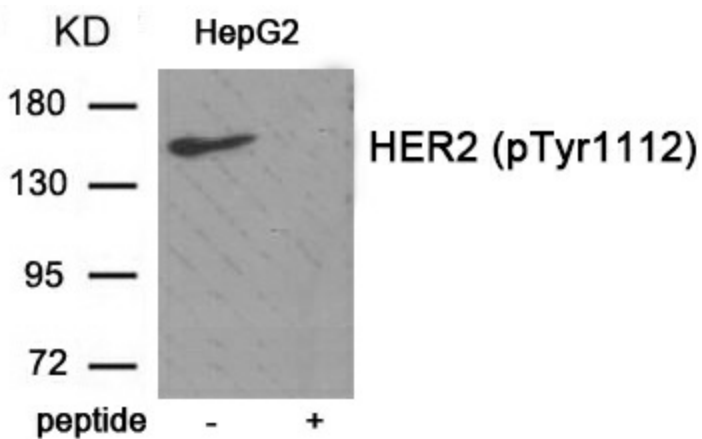
#### Product data:

Product Type:	Primary Antibodies
Applications:	WB
Recommended Dilution:	<b>Western blot:</b> 1:500~1:1000.
Reactivity:	Human, Mouse, Rat
Host:	Rabbit
Clonality:	Polyclonal
Immunogen:	Peptide sequence around phosphorylation site of tyrosine 1112 (Q-R-Y(p)-S-E) derived from Human HER2 (KLH-conjugated)
Specificity:	The antibody detects endogenous level of HER2 only when phosphorylated at tyrosine 1112.
Formulation:	Rabbit IgG in phosphate buffered saline (without Mg <sup>2+</sup> and Ca <sup>2+</sup> ), pH 7.4, 150mM NaCl, 0.02% sodium azide and 50% glycerol State: Aff - Purified State: Liquid Ig fraction
Concentration:	lot specific
Purification:	Affinity chromatography using epitope-specific peptide
Conjugation:	Unconjugated
Storage:	Upon receipt, store undiluted (in aliquots) at -20°C. Avoid repeated freezing and thawing.
Stability:	Shelf life: one year from despatch.
Predicted Protein Size:	150 kDa
Gene Name:	erb-b2 receptor tyrosine kinase 2
Database Link:	<a href="#">Entrez Gene 2064 Human P04626</a>
Background:	Essential component of a neuregulin-receptor complex, although neuregulins do not interact with it alone. GP30 is a potential ligand for this receptor. Not activated by EGF, TGF-alpha and amphiregulin.
Synonyms:	HER-2, NEU, p185erbB2, NGL, c-erbB-2, MNL19



[View online »](#)

## Product images:



Western blot analysis of extracts from HepG2 tissue using HER2 (Phospho-Tyr1112) antibody. The lane on the right is treated with the antigen-specific peptide.