

Product datasheet for **AP55854PU-S**

CRMP2 (DPYSL2) pSer522 Rabbit Polyclonal Antibody

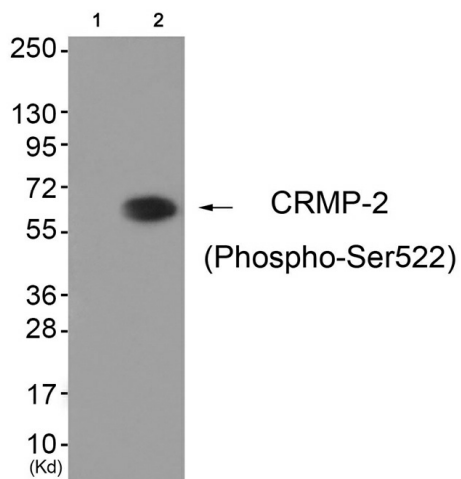
Product data:

Product Type:	Primary Antibodies
Applications:	WB
Recommended Dilution:	Western blot: 1:500~1:1000.
Reactivity:	Human, Mouse, Rat
Host:	Rabbit
Clonality:	Polyclonal
Immunogen:	Peptide sequence around phosphorylation site of Serine 522(K-T-S(p)-P-A) derived from Human CRMP-2 (KLH-conjugated)
Specificity:	The antibody detects endogenous levels of DPYSL2 only when phosphorylated at serine 522.
Formulation:	Rabbit IgG in phosphate buffered saline (without Mg ²⁺ and Ca ²⁺), pH 7.4, 150mM NaCl, 0.02% sodium azide and 50% glycerol State: Aff - Purified State: Liquid Ig fraction
Concentration:	lot specific
Purification:	Affinity chromatography using epitope-specific peptide
Conjugation:	Unconjugated
Storage:	Upon receipt, store undiluted (in aliquots) at -20°C. Avoid repeated freezing and thawing.
Stability:	Shelf life: one year from despatch.
Predicted Protein Size:	62 kDa
Gene Name:	dihydropyrimidinase like 2
Database Link:	Entrez Gene 1808 Human Q16555
Background:	CRMP-2 is an enzyme with dihydropyrimidinase activity. Plays a role in RhoA-dependent signaling, through interaction with and regulation of Rho kinase. Plays a role in neurogenesis. Aberrantly expressed in fetal Down syndrome brain.
Synonyms:	Dihydropyrimidinase-related protein 2, DRP-2, N2A3



[View online »](#)

Product images:



Western blot analysis of extracts from HuvEc cells (Lane 2), using CRMP-2 (Phospho-Ser522) Antibody. The lane on the left is treated with antigen-specific peptide.