

Product datasheet for **AP55852PU-S**

Annexin A2 (ANXA2) pSer26 Rabbit Polyclonal Antibody

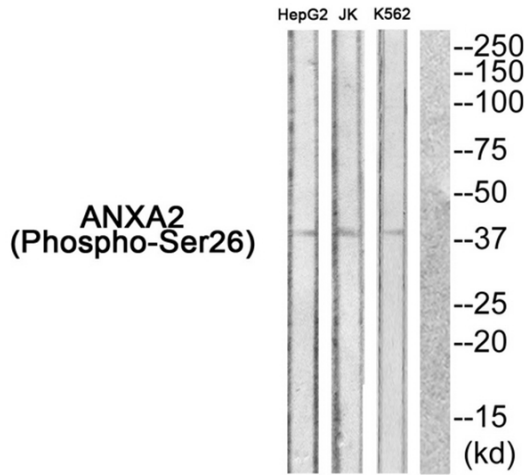
Product data:

Product Type:	Primary Antibodies
Applications:	WB
Recommended Dilution:	Western blot: 1:500~1:1000.
Reactivity:	Human, Mouse, Rat
Host:	Rabbit
Clonality:	Polyclonal
Immunogen:	Peptide sequence around phosphorylation site of Serine 26 (Y-G-S(p)-V-K) derived from Human ANXA2 (KLH-conjugated)
Specificity:	The antibody detects endogenous levels of ANXA2 only when phosphorylated at serine 26.
Formulation:	Rabbit IgG in phosphate buffered saline (without Mg ²⁺ and Ca ²⁺), pH 7.4, 150mM NaCl, 0.02% sodium azide and 50% glycerol State: Aff - Purified State: Liquid Ig fraction
Concentration:	lot specific
Purification:	Affinity chromatography using epitope-specific peptide
Conjugation:	Unconjugated
Storage:	Upon receipt, store undiluted (in aliquots) at -20°C. Avoid repeated freezing and thawing.
Stability:	Shelf life: one year from despatch.
Predicted Protein Size:	38 kDa
Gene Name:	annexin A2
Database Link:	Entrez Gene 302 Human P07355
Background:	Calcium-regulated membrane-binding protein whose affinity for calcium is greatly enhanced by anionic phospholipids. It binds two calcium ions with high affinity. May be involved in heat-stress response.
Synonyms:	ANX2, ANX2L4, CAL1H, LPC2D, Annexin-2, Annexin II, Lipocortin II, Calpactin I heavy chain, Chromobindin-8, p36, Protein I



[View online >](#)

Product images:



Western blot analysis of extracts from HepG2 cells JK cells and K562 cells using ANXA2 (Phospho-Ser26) Antibody. The lane on the right is treated with the antigen-specific peptide.