

Product datasheet for **AP55850PU-N**

FGFR4 pTyr642 Rabbit Polyclonal Antibody

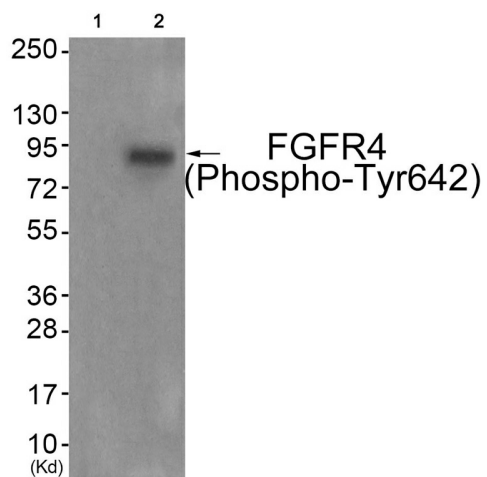
Product data:

Product Type:	Primary Antibodies
Applications:	WB
Recommended Dilution:	Western blot: 1/500~1/1000.
Reactivity:	Human, Mouse, Rat
Host:	Rabbit
Clonality:	Polyclonal
Immunogen:	Peptide sequence around phosphorylation site of tyrosine 642(I-D-Y(p)-Y-K) derived from Human FGFR4 (KLH-conjugated)
Specificity:	The antibody detects endogenous levels of FGFR4 only when phosphorylated at tyrosine 642.
Formulation:	Rabbit IgG in phosphate buffered saline (without Mg ²⁺ and Ca ²⁺), pH 7.4, 150mM NaCl, 0.02% sodium azide and 50% glycerol State: Aff - Purified State: Liquid Ig fraction
Concentration:	lot specific
Purification:	Affinity chromatography using epitope-specific peptide
Conjugation:	Unconjugated
Storage:	Upon receipt, store undiluted (in aliquots) at -20°C. Avoid repeated freezing and thawing.
Stability:	Shelf life: one year from despatch.
Predicted Protein Size:	90 kDa
Gene Name:	fibroblast growth factor receptor 4
Database Link:	Entrez Gene 2264 Human P22455
Background:	Receptor for acidic fibroblast growth factor. Does not bind to basic fibroblast growth factor. Binds FGF19.
Synonyms:	FGFR-4, JTK2, TKF



[View online »](#)

Product images:



Western blot analysis of extracts from JK cells (Lane 2), using FGFR4 (Phospho-Tyr642) Antibody. The lane on the left is treated with antigen-specific peptide.