

Product datasheet for **AP55849PU-S**

Eph receptor A7 (EPHA7) pTyr791 Rabbit Polyclonal Antibody

Product data:

Product Type:	Primary Antibodies
Applications:	WB
Recommended Dilution:	Western blot: 1:500~1:1000.
Reactivity:	Human, Mouse, Rat
Host:	Rabbit
Clonality:	Polyclonal
Immunogen:	Peptide sequence around phosphorylation site of tyrosine 791 (A-V-Y(p)-T-T) derived from Human EPHA7 (KLH-conjugated)
Specificity:	The antibody detects endogenous levels of EPHA7 only when phosphorylated at tyrosine 791.
Formulation:	Rabbit IgG in phosphate buffered saline (without Mg ²⁺ and Ca ²⁺), pH 7.4, 150mM NaCl, 0.02% sodium azide and 50% glycerol State: Aff - Purified State: Liquid Ig fraction
Concentration:	lot specific
Purification:	Affinity chromatography using epitope-specific peptide
Conjugation:	Unconjugated
Storage:	Upon receipt, store undiluted (in aliquots) at -20°C. Avoid repeated freezing and thawing.
Stability:	Shelf life: one year from despatch.
Predicted Protein Size:	112 kDa
Gene Name:	EPH receptor A7
Database Link:	Entrez Gene 2045 Human Q15375



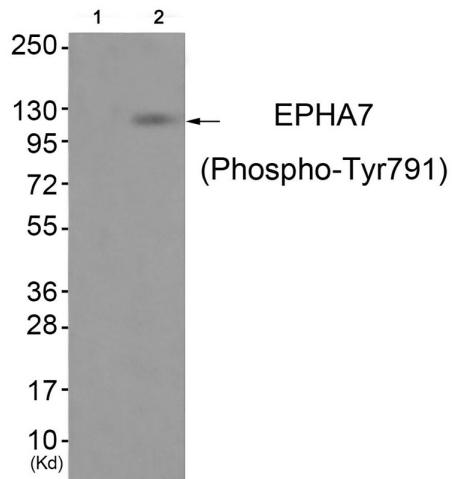
[View online »](#)

Background:

Receptor tyrosine kinase which binds promiscuously GPI-anchored ephrin-A family ligands residing on adjacent cells, leading to contact-dependent bidirectional signaling into neighboring cells. The signaling pathway downstream of the receptor is referred to as forward signaling while the signaling pathway downstream of the ephrin ligand is referred to as reverse signaling. Among GPI-anchored ephrin-A ligands, EFNA5 is a cognate/functional ligand for EPHA7 and their interaction regulates brain development modulating cell-cell adhesion and repulsion. Has a repellent activity on axons and is for instance involved in the guidance of corticothalamic axons and in the proper topographic mapping of retinal axons to the colliculus.

Synonyms:

EHK3, HEK11, Ephrin type-A receptor 7

Product images:

Western blot analysis of extracts from JK cells (Lane 2), using EPHA7 (Phospho-Tyr791) Antibody. The lane on the left is treated with antigen-specific peptide.