

## Product datasheet for **AP55848PU-S**

### Eph receptor A4 (EPHA4) pTyr596 Rabbit Polyclonal Antibody

#### Product data:

Product Type:	Primary Antibodies
Applications:	WB
Recommended Dilution:	<b>Western blot:</b> 1:500~1:1000.
Reactivity:	Human, Mouse
Host:	Rabbit
Clonality:	Polyclonal
Immunogen:	Peptide sequence around phosphorylation site of tyrosine 596 (R-T-Y(p)-V-D) derived from Human EPHA4 (KLH-conjugated)
Specificity:	The antibody detects endogenous levels of EPHA4 only when phosphorylated at tyrosine 596
Formulation:	Rabbit IgG in phosphate buffered saline (without Mg <sup>2+</sup> and Ca <sup>2+</sup> ), pH 7.4, 150mM NaCl, 0.02% sodium azide and 50% glycerol State: Aff - Purified State: Liquid Ig fraction
Concentration:	lot specific
Purification:	Affinity chromatography using epitope-specific peptide
Conjugation:	Unconjugated
Storage:	Upon receipt, store undiluted (in aliquots) at -20°C. Avoid repeated freezing and thawing.
Stability:	Shelf life: one year from despatch.
Predicted Protein Size:	110 kDa
Gene Name:	EPH receptor A4
Database Link:	<a href="#">Entrez Gene 2043 Human P54764</a>



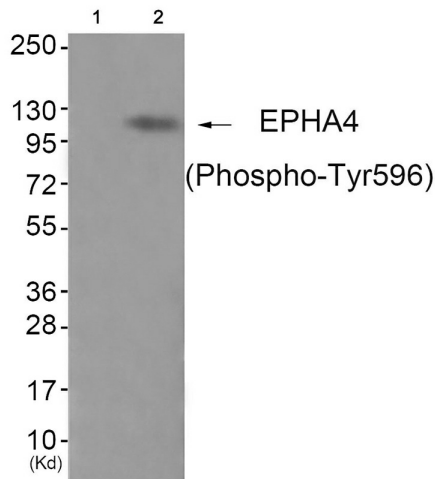
[View online »](#)

**Background:**

Receptor tyrosine kinase which binds membrane-bound ephrin family ligands residing on adjacent cells, leading to contact-dependent bidirectional signaling into neighboring cells. The signaling pathway downstream of the receptor is referred to as forward signaling while the signaling pathway downstream of the ephrin ligand is referred to as reverse signaling. Highly promiscuous, it has the unique property among Eph receptors to bind and to be physiologically activated by both GPI-anchored ephrin-A and transmembrane ephrin-B ligands including EFNA1 and EFNB3. Upon activation by ephrin ligands, modulates cell morphology and integrin-dependent cell adhesion through regulation of the Rac, Rap and Rho GTPases activity.

**Synonyms:**

HEK8, SEK, TYRO1, Ephrin type-A receptor 4

**Product images:**


Western blot analysis of extracts from JK cells (Lane 2), using EPHA4 (Phospho-Tyr596) Antibody. The lane on the left is treated with antigen-specific peptide.