

## Product datasheet for **AP55847PU-S**

### Eph receptor A2 (EPHA2) pTyr594 Rabbit Polyclonal Antibody

#### Product data:

|                         |   |
|-------------------------|---|
| Product Type:           | Primary Antibodies  |
| Applications:           | WB  |
| Recommended Dilution:   | Western blot: 1:500~1:1000.   |
| Reactivity:             | Human, Mouse  |
| Host:                   | Rabbit  |
| Clonality:              | Polyclonal  |
| Immunogen:              | Peptide sequence around phosphorylation site of tyrosine 594 (H-T-Y(p)-E-D) derived from Human EPHA2/5 (KLH-conjugated)   |
| Specificity:            | The Antibody detects endogenous levels of EPHA2 only when phosphorylated at tyrosine 594.   |
| Formulation:            | Rabbit IgG in phosphate buffered saline (without Mg <sup>2+</sup> and Ca <sup>2+</sup> ), pH 7.4, 150mM NaCl, 0.02% sodium azide and 50% glycerol<br>State: Aff - Purified<br>State: Liquid Ig fraction |
| Concentration:          | lot specific  |
| Purification:           | Affinity chromatography using epitope-specific peptide  |
| Conjugation:            | Unconjugated  |
| Storage:                | Upon receipt, store undiluted (in aliquots) at -20°C.<br>Avoid repeated freezing and thawing.   |
| Stability:              | Shelf life: one year from despatch.   |
| Predicted Protein Size: | 110 kDa   |
| Gene Name:              | EPH receptor A2   |
| Database Link:          | <a href="#">Entrez Gene 1969 Human P29317</a>   |



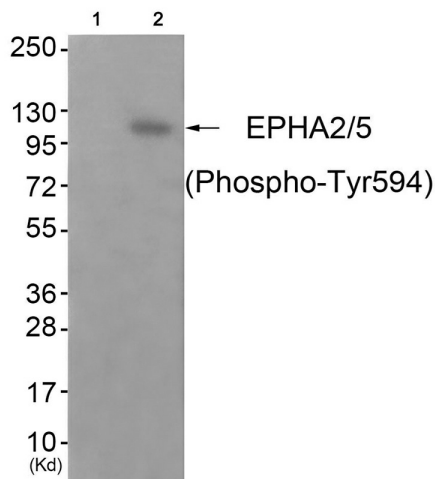
[View online »](#)

**Background:**

Receptor tyrosine kinase which binds promiscuously membrane-bound ephrin-A family ligands residing on adjacent cells, leading to contact-dependent bidirectional signaling into neighboring cells. The signaling pathway downstream of the receptor is referred to as forward signaling while the signaling pathway downstream of the ephrin ligand is referred to as reverse signaling. Activated by the ligand ephrin-A1/EFNA1 regulates migration, integrin-mediated adhesion, proliferation and differentiation of cells. Regulates cell adhesion and differentiation through DSG1/desmoglein-1 and inhibition of the ERK1/ERK2 (MAPK3/MAPK1, respectively) signaling pathway.

**Synonyms:**

ECK, EK7, Ephrin type-A receptor 2, Ephrin type-A receptor 5, Epithelial cell kinase, Eph receptor A5, Epithelial cell kinase, Eph receptor A5

**Product images:**

Western blot analysis of extracts from JK cells (Lane 2), using EPHA2/5 (Phospho-Tyr594) Antibody. The lane on the left is treated with antigen-specific peptide.