

## Product datasheet for **AP55843PU-N**

### alpha Tubulin (TUBA1A) pTyr272 Rabbit Polyclonal Antibody

#### Product data:

Product Type:	Primary Antibodies
Applications:	WB
Recommended Dilution:	Western blot: 1:500~1:1000.
Reactivity:	Human, Mouse, Rat
Host:	Rabbit
Clonality:	Polyclonal
Immunogen:	Peptide sequence around phosphorylation site of tyrosine 272 (A-T-Y(p)-A-P) derived from Human TUBA1/3/4 (KLH-conjugated)
Specificity:	The antibody detects endogenous levels of TUBA1/3/4 only when phosphorylated at tyrosine 272.
Formulation:	Rabbit IgG in phosphate buffered saline (without Mg <sup>2+</sup> and Ca <sup>2+</sup> ), pH 7.4, 150mM NaCl, 0.02% sodium azide and 50% glycerol State: Aff - Purified State: Liquid Ig fraction
Concentration:	lot specific
Purification:	Affinity chromatography using epitope-specific peptide
Conjugation:	Unconjugated
Storage:	Upon receipt, store undiluted (in aliquots) at -20°C. Avoid repeated freezing and thawing.
Stability:	Shelf life: one year from despatch.
Predicted Protein Size:	50-55 kDa
Gene Name:	tubulin alpha 1a
Database Link:	<a href="#">Entrez Gene 7846 Human Q71U36</a>



[View online »](#)

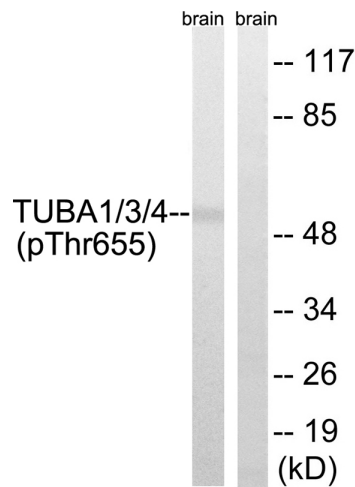
**Background:**

Microtubules of the eukaryotic cytoskeleton perform essential and diverse functions and are composed of a heterodimer of alpha and beta tubulins. The genes encoding these microtubule constituents belong to the tubulin superfamily, which is composed of six distinct families. Genes from the alpha, beta and gamma tubulin families are found in all eukaryotes. The alpha and beta tubulins represent the major components of microtubules, while gamma tubulin plays a critical role in the nucleation of microtubule assembly. There are multiple alpha and beta tubulin genes, which are highly conserved among species.

**Synonyms:**

Tubulin alpha-1A chain, Tubulin alpha-4A chain, Tubulin B-alpha-1, Tubulin alpha-3 chain, Alpha-tubulin 3, TUBA4A, Tubulin H2-alpha, Alpha-tubulin 4B, TUBA4, TUBA4B

**Product images:**



Western blot analysis of extracts from Rat brain cells using TUBA1/3/4 (Phospho-Tyr272) Antibody. The lane on the right is treated with the antigen-specific peptide.