

Product datasheet for **AP55842PU-N**

SYK pTyr352 Rabbit Polyclonal Antibody

Product data:

Product Type:	Primary Antibodies
Applications:	WB
Recommended Dilution:	Western blot: 1:500~1:1000.
Reactivity:	Human, Mouse, Rat
Host:	Rabbit
Clonality:	Polyclonal
Immunogen:	Peptide sequence around phosphorylation site of tyrosine 352(S-P-Y(p)-A-D) derived from Human SYK (KLH-conjugated)
Specificity:	The antibody detects endogenous levels of SYK only when phosphorylated at tyrosine 352.
Formulation:	Rabbit IgG in phosphate buffered saline (without Mg ²⁺ and Ca ²⁺), pH 7.4, 150mM NaCl, 0.02% sodium azide and 50% glycerol State: Aff - Purified State: Liquid Ig fraction
Concentration:	lot specific
Purification:	Affinity chromatography using epitope-specific peptide
Conjugation:	Unconjugated
Storage:	Upon receipt, store undiluted (in aliquots) at -20°C. Avoid repeated freezing and thawing.
Stability:	Shelf life: one year from despatch.
Predicted Protein Size:	72 kDa
Gene Name:	spleen tyrosine kinase
Database Link:	Entrez Gene 6850 Human P43405



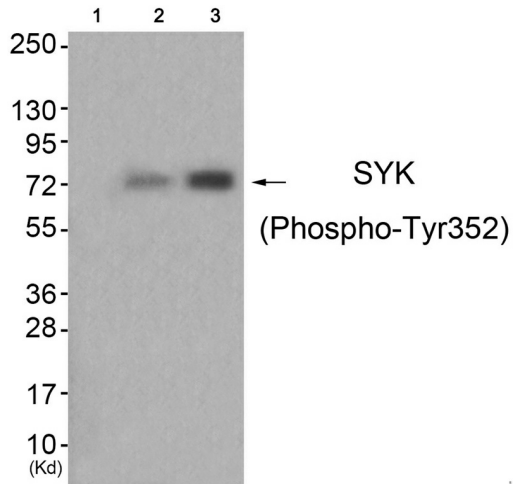
[View online »](#)

Background:

Positive effector of BCR-stimulated responses. Couples the B-cell antigen receptor (BCR) to the mobilization of calcium ion either through a phosphoinositide 3-kinase-dependent pathway, when not phosphorylated on tyrosines of the linker region, or through a phospholipase C-gamma-dependent pathway, when phosphorylated on Tyr-348 and Tyr-352. Thus the differential phosphorylation of Syk can determine the pathway by which BCR is coupled to the regulation of intracellular calcium ion

Synonyms:

Tyrosine-protein kinase SYK, Spleen tyrosine kinase

Product images:

Western blot analysis of extracts from HuvEc cells (Lane 2) and HepG2 cells (Lane 3), using SYK (Phospho-Tyr352) Antibody. The lane on the left is treated with antigen-specific peptide.