

## Product datasheet for **AP55841PU-S**

### ERK2 (MAPK1) pTyr205/222 Rabbit Polyclonal Antibody

#### Product data:

Product Type:	Primary Antibodies
Applications:	WB
Recommended Dilution:	Western blot: 1:500~1:1000.
Reactivity:	Human, Mouse, Rat
Host:	Rabbit
Clonality:	Polyclonal
Immunogen:	Peptide sequence around phosphorylation site of tyrosine 205/222(K-G-Y(p)-T-K) derived from Human MAPK1/3 (KLH-conjugated)
Specificity:	The antibody detects endogenous levels of MAPK1/3 only when phosphorylated at tyrosine 205/222.
Formulation:	Rabbit IgG in phosphate buffered saline (without Mg <sup>2+</sup> and Ca <sup>2+</sup> ), pH 7.4, 150mM NaCl, 0.02% sodium azide and 50% glycerol State: Aff - Purified State: Liquid Ig fraction
Concentration:	lot specific
Purification:	Affinity chromatography using epitope-specific peptide
Conjugation:	Unconjugated
Storage:	Upon receipt, store undiluted (in aliquots) at -20°C. Avoid repeated freezing and thawing.
Stability:	Shelf life: one year from despatch.
Predicted Protein Size:	44 kDa
Gene Name:	mitogen-activated protein kinase 1
Database Link:	<a href="#">Entrez Gene 5594 Human P28482</a>



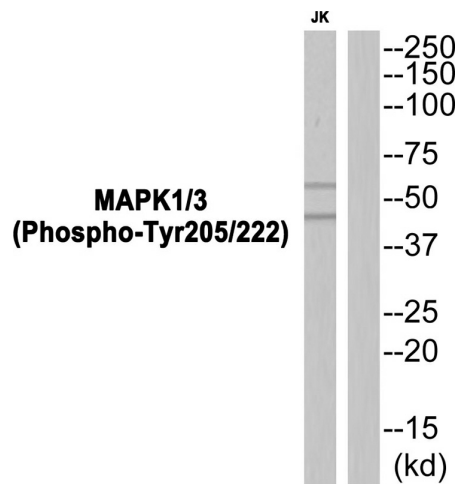
[View online »](#)

**Background:**

The protein encoded by this gene is a member of the MAP kinase family. MAP kinases, also known as extracellular signal-regulated kinases (ERKs), act as an integration point for multiple biochemical signals, and are involved in a wide variety of cellular processes such as proliferation, differentiation, transcription regulation and development. The activation of this kinase requires its phosphorylation by upstream kinases. Upon activation, this kinase translocates to the nucleus of the stimulated cells, where it phosphorylates nuclear targets. Two alternatively spliced transcript variants encoding the same protein, but differing in the UTRs, have been reported for this gene.

**Synonyms:**

Mitogen-activated protein kinase 1, p42-MAPK, ERT1, PRKM1, PRKM2, MAP kinase 2, MAPK2, MAPK1

**Product images:**

Western blot analysis of extracts from JK cells using MAPK1/3 (Phospho-Tyr205/222) Antibody. The lane on the right is treated with the antigen-specific peptide.