

Product datasheet for **AP55840PU-S**

Integrin beta 1 (ITGB1) pTyr795 Rabbit Polyclonal Antibody

Product data:

Product Type:	Primary Antibodies
Applications:	WB
Recommended Dilution:	Western blot: 1:500~1:1000.
Reactivity:	Human, Mouse, Rat
Host:	Rabbit
Clonality:	Polyclonal
Immunogen:	Peptide sequence around phosphorylation site of tyrosine 795(P-K-Y(p)-E-G) derived from Human ITGB1 (KLH-conjugated)
Specificity:	The antibody detects endogenous levels of ITGB1 only when phosphorylated at tyrosine 795.
Formulation:	Rabbit IgG in phosphate buffered saline (without Mg ²⁺ and Ca ²⁺), pH 7.4, 150mM NaCl, 0.02% sodium azide and 50% glycerol State: Aff - Purified State: Liquid Ig fraction
Concentration:	lot specific
Purification:	Affinity chromatography using epitope-specific peptide
Conjugation:	Unconjugated
Storage:	Upon receipt, store undiluted (in aliquots) at -20°C. Avoid repeated freezing and thawing.
Stability:	Shelf life: one year from despatch.
Predicted Protein Size:	140 kDa
Gene Name:	integrin subunit beta 1
Database Link:	Entrez Gene 3688 Human P05556



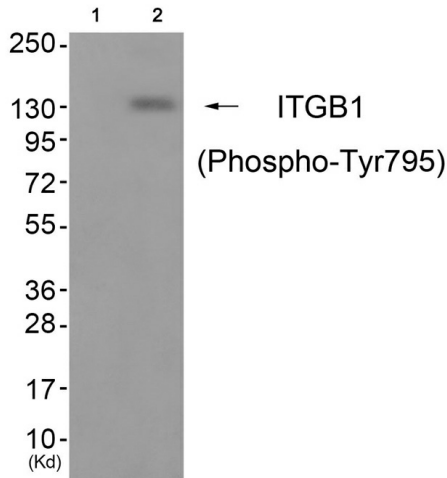
[View online »](#)

Background:

Integrins are heterodimeric proteins made up of alpha and beta subunits. At least 18 alpha and 8 beta subunits have been described in mammals. Integrin family members are membrane receptors involved in cell adhesion and recognition in a variety of processes including embryogenesis, hemostasis, tissue repair, immune response and metastatic diffusion of tumor cells. This gene encodes a beta subunit. Multiple alternatively spliced transcript variants which encode different protein isoforms have been found for this gene.

Synonyms:

Fibronectin receptor subunit beta, Integrin VLA-4 subunit beta, ITGB1, FNRB, MDF2, MSK12

Product images:

Western blot analysis of extracts from cos-7 cells (Lane 2), using ITGB1 (Phospho-Tyr795) Antibody. The lane on the left is treated with antigen-specific peptide.