

## Product datasheet for **AP55838PU-S**

### **NMDAR2B (GRIN2B) pSer1303 Rabbit Polyclonal Antibody**

#### **Product data:**

Product Type:	Primary Antibodies
Applications:	WB
Recommended Dilution:	<b>Western blot:</b> 1:500~1:1000.
Reactivity:	Human, Mouse, Rat
Host:	Rabbit
Clonality:	Polyclonal
Immunogen:	Peptide sequence around phosphorylation site of Serine 1303(Q-H-S(p)-Y-D) derived from Human GRIN2B (KLH-conjugated)
Specificity:	The antibody detects endogenous levels of GRIN2B only when phosphorylated at serine 1303.
Formulation:	Rabbit IgG in phosphate buffered saline (without Mg <sup>2+</sup> and Ca <sup>2+</sup> ), pH 7.4, 150mM NaCl, 0.02% sodium azide and 50% glycerol State: Aff - Purified State: Liquid Ig fraction
Concentration:	lot specific
Purification:	Affinity chromatography using epitope-specific peptide
Conjugation:	Unconjugated
Storage:	Upon receipt, store undiluted (in aliquots) at -20°C. Avoid repeated freezing and thawing.
Stability:	Shelf life: one year from despatch.
Predicted Protein Size:	170 kDa
Gene Name:	glutamate ionotropic receptor NMDA type subunit 2B
Database Link:	<a href="#">Entrez Gene 2904 Human Q13224</a>



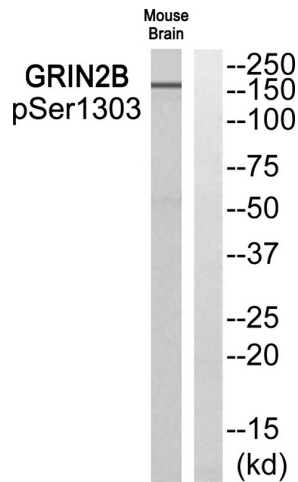
[View online »](#)

**Background:**

N-methyl-D-aspartate (NMDA) receptors are a class of ionotropic glutamate receptors. NMDA receptor channel has been shown to be involved in long-term potentiation, an activity-dependent increase in the efficiency of synaptic transmission thought to underlie certain kinds of memory and learning. NMDA receptor channels are heteromers composed of three different subunits: NR1 (GRIN1), NR2 (GRIN2A, GRIN2B, GRIN2C, or GRIN2D) and NR3 (GRIN3A or GRIN3B). The NR2 subunit acts as the agonist binding site for glutamate. This receptor is the predominant excitatory neurotransmitter receptor in the mammalian brain.

**Synonyms:**

GRIN2B, NMDA Receptor 2B

**Product images:**


Western blot analysis of extracts from Mouse brain cells using GRIN2B (Phospho-Ser1303) Antibody. The lane on the right is treated with the antigen-specific peptide.