

## Product datasheet for **AP55837PU-S**

### FADD pSer191 Rabbit Polyclonal Antibody

#### Product data:

Product Type:	Primary Antibodies
Applications:	IHC, WB
Recommended Dilution:	<b>Western blot:</b> 1:500~1:1000. <b>Immunohistochemistry on paraffin sections:</b> 1:50~1:100.
Reactivity:	Human, Mouse
Host:	Rabbit
Clonality:	Polyclonal
Immunogen:	Peptide sequence around phosphorylation site of Serine191(R-S-G(p)-A-M) derived from Human FADD (KLH-conjugated)
Specificity:	The antibody detects endogenous levels of FADD only when phosphorylated at serine 191.
Formulation:	Rabbit IgG in phosphate buffered saline (without Mg <sup>2+</sup> and Ca <sup>2+</sup> ), pH 7.4, 150mM NaCl, 0.02% sodium azide and 50% glycerol State: Aff - Purified State: Liquid Ig fraction
Concentration:	lot specific
Purification:	Affinity chromatography using epitope-specific peptide
Conjugation:	Unconjugated
Storage:	Upon receipt, store undiluted (in aliquots) at -20°C. Avoid repeated freezing and thawing.
Stability:	Shelf life: one year from despatch.
Predicted Protein Size:	25 kDa
Gene Name:	Fas associated via death domain
Database Link:	<a href="#">Entrez Gene 8772 Human Q13158</a>



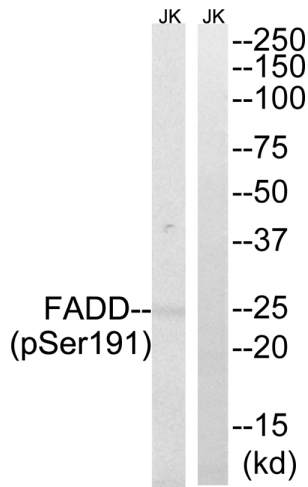
[View online »](#)

**Background:**

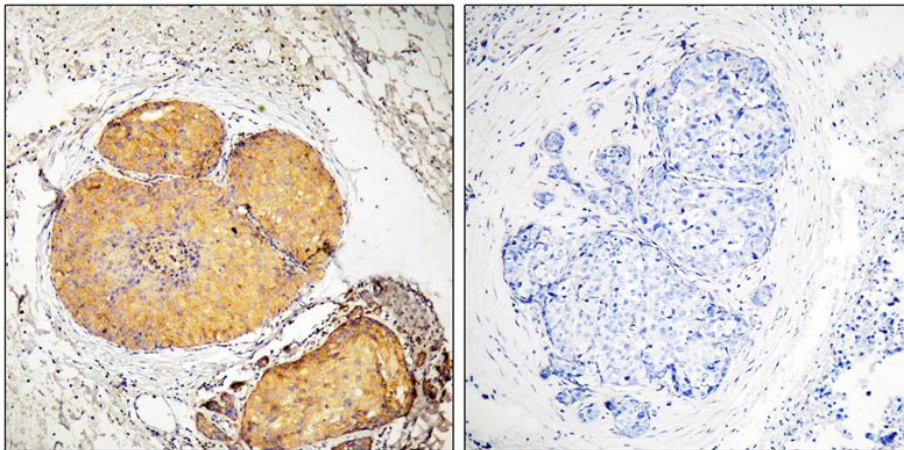
The protein encoded by this gene is an adaptor molecule that interacts with various cell surface receptors and mediates cell apoptotic signals. Through its C-terminal death domain, this protein can be recruited by TNFRSF6/Fas-receptor, tumor necrosis factor receptor, TNFRSF25, and TNFSF10/TRAIL-receptor, and thus it participates in the death signaling initiated by these receptors. Interaction of this protein with the receptors unmasks the N-terminal effector domain of this protein, which allows it to recruit caspase-8, and thereby activate the cysteine protease cascade. Knockout studies in mice also suggest the importance of this protein in early T cell development.

**Synonyms:**

FAS-associated death domain protein, MORT1, GIG3

**Product images:**


Western blot analysis of extracts from Jurkat cells treated with PMA using FADD (Phospho-Ser191) Antibody. The lane on the right is treated with the antigen-specific peptide.



Immunohistochemical analysis of paraffin-embedded human breast carcinoma tissue, using FADD (Phospho-Ser191) Antibody (left) or the same antibody preincubated with blocking peptide (right).