

Product datasheet for **AP55836PU-N**

YB1 (YBX1) pSer102 Rabbit Polyclonal Antibody

Product data:

Product Type:	Primary Antibodies
Applications:	WB
Recommended Dilution:	Western blot: 1:500~1:1000.
Reactivity:	Human, Mouse, Rat
Host:	Rabbit
Clonality:	Polyclonal
Immunogen:	Peptide sequence around phosphorylation site of Serine 102(L-R-S(p)-V-G) derived from Human YB1 (KLH-conjugated)
Specificity:	The antibody detects endogenous levels of YB1 only when phosphorylated at serine 102.
Formulation:	Rabbit IgG in phosphate buffered saline (without Mg ²⁺ and Ca ²⁺), pH 7.4, 150mM NaCl, 0.02% sodium azide and 50% glycerol State: Aff - Purified State: Liquid Ig fraction
Concentration:	lot specific
Purification:	Affinity chromatography using epitope-specific peptide
Conjugation:	Unconjugated
Storage:	Upon receipt, store undiluted (in aliquots) at -20°C. Avoid repeated freezing and thawing.
Stability:	Shelf life: one year from despatch.
Predicted Protein Size:	36 kDa
Gene Name:	Y-box binding protein 1
Database Link:	Entrez Gene 4904 Human P67809



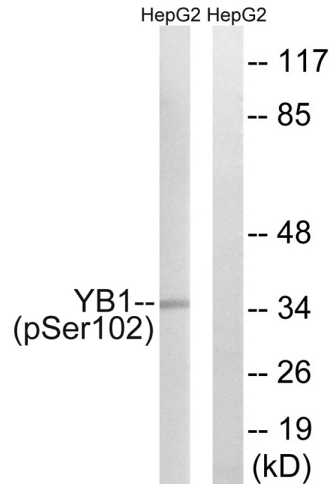
[View online »](#)

Background:

YB-1 is a nuclear protein that binds to splice sites in pre-mRNA and regulates splice site selection. Binds and stabilizes cytoplasmic mRNA. Contributes to the regulation of translation by modulating the interaction between the mRNA and eukaryotic initiation factors CCAAT-containing Y-box of HLA class II genes. Component of cytoplasmic messenger ribonucleoprotein particles (mRNPs). Interacts with AKT1, SFRS9, THOC4, MSH2, XRCC5, WRN and NCL. Can bind to DNA as a homomeric form, (EFI-A)_n or as a heteromeric form in association with EFI-B. Homodimer in the presence of ATP.

Synonyms:

NSEP1, YB1, CBF-A, EFI-A

Product images:


Western blot analysis of extracts from HepG2 cells treated with PMA using YB1 (Phospho-Ser102) Antibody. The lane on the right is treated with the antigen-specific peptide.