

Product datasheet for **AP55835PU-N**

Phospholipase D1 (PLD1) pThr147 Rabbit Polyclonal Antibody

Product data:

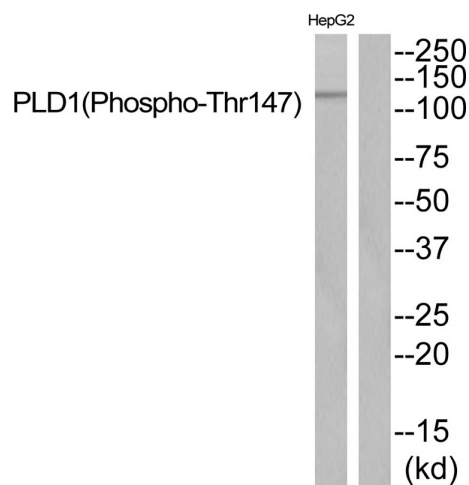
Product Type:	Primary Antibodies
Applications:	WB
Recommended Dilution:	Western blot: 1:500~1:1000.
Reactivity:	Human, Mouse, Rat
Host:	Rabbit
Clonality:	Polyclonal
Immunogen:	Peptide sequence around phosphorylation site of threonine 147(R-H-T(p)-F-R) derived from Human PLD1 (KLH-conjugated)
Specificity:	The antibody detects endogenous levels of PLD1 only when phosphorylated at threonine 147.
Formulation:	Rabbit IgG in phosphate buffered saline (without Mg ²⁺ and Ca ²⁺), pH 7.4, 150mM NaCl, 0.02% sodium azide and 50% glycerol State: Aff - Purified State: Liquid Ig fraction
Concentration:	lot specific
Purification:	Affinity chromatography using epitope-specific peptide
Conjugation:	Unconjugated
Storage:	Upon receipt, store undiluted (in aliquots) at -20°C. Avoid repeated freezing and thawing.
Stability:	Shelf life: one year from despatch.
Predicted Protein Size:	120 kDa
Gene Name:	phospholipase D1
Database Link:	Entrez Gene 5337 Human Q13393
Background:	Phosphatidylcholine (PC)-specific phospholipases D (PLDs; EC 3.1.4.4) catalyze the hydrolysis of PC to produce phosphatidic acid and choline. A range of agonists acting through G protein-coupled receptors and receptor tyrosine kinases stimulate this hydrolysis. PC-specific PLD activity has been implicated in numerous cellular pathways, including signal transduction, membrane trafficking, and the regulation of mitosis.



[View online >](#)

Synonyms: PLD-1, Choline phosphatase 1

Product images:



Western blot analysis of extracts from HepG2 cells using PLD1 (Phospho-Thr147) Antibody. The lane on the right is treated with the antigen-specific peptide.