

## Product datasheet for **AP55834PU-S**

### **HCLS1 pTyr397 Rabbit Polyclonal Antibody**

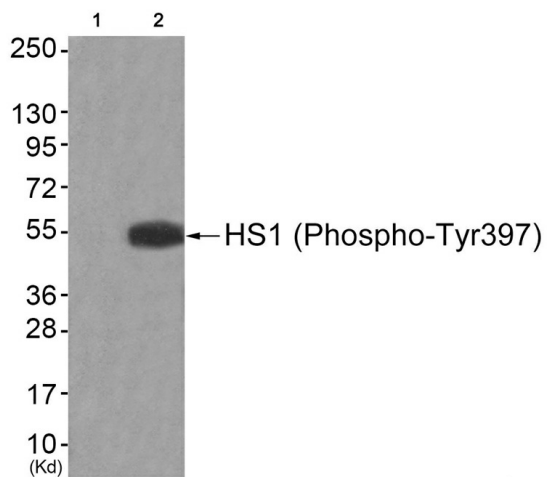
#### **Product data:**

<b>Product Type:</b>	Primary Antibodies
<b>Applications:</b>	WB
<b>Recommended Dilution:</b>	Western blot: 1:500~1:1000.
<b>Reactivity:</b>	Human
<b>Host:</b>	Rabbit
<b>Clonality:</b>	Polyclonal
<b>Immunogen:</b>	Peptide sequence around phosphorylation site of tyrosine 397(G-D-Y(p)-E-E) derived from Human HS1 (KLH-conjugated)
<b>Specificity:</b>	The antibody detects endogenous levels of HS1 only when phosphorylated at tyrosine 397.
<b>Formulation:</b>	Rabbit IgG in phosphate buffered saline (without Mg <sup>2+</sup> and Ca <sup>2+</sup> ), pH 7.4, 150mM NaCl, 0.02% sodium azide and 50% glycerol State: Aff - Purified State: Liquid Ig fraction
<b>Concentration:</b>	lot specific
<b>Purification:</b>	Affinity chromatography using epitope-specific peptide
<b>Conjugation:</b>	Unconjugated
<b>Storage:</b>	Upon receipt, store undiluted (in aliquots) at -20°C. Avoid repeated freezing and thawing.
<b>Stability:</b>	Shelf life: one year from despatch.
<b>Predicted Protein Size:</b>	54 kDa
<b>Gene Name:</b>	hematopoietic cell-specific Lyn substrate 1
<b>Database Link:</b>	<a href="#">Entrez Gene 3059 Human P14317</a>
<b>Background:</b>	Substrate of the antigen receptor-coupled tyrosine kinase. Plays a role in antigen receptor signaling for both clonal expansion and deletion in lymphoid cells. Directly associates with HAX-1, through binding to its C-terminal region. May also be involved in the regulation of gene expression.
<b>Synonyms:</b>	LckBP1



[View online »](#)

## Product images:



Western blot analysis of extracts from JK cells (Lane 2), using HS1 (Phospho-Tyr397) Antibody. The lane on the left is treated with antigen-specific peptide.