

## Product datasheet for **AP55834PU-N**

### HCLS1 pTyr397 Rabbit Polyclonal Antibody

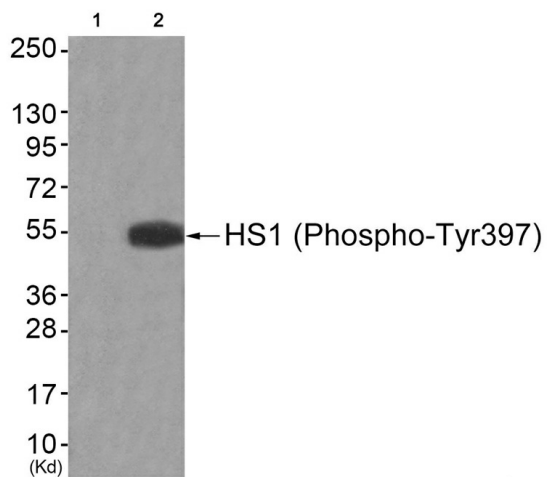
#### Product data:

Product Type:	Primary Antibodies
Applications:	WB
Recommended Dilution:	Western blot: 1:500~1:1000.
Reactivity:	Human
Host:	Rabbit
Clonality:	Polyclonal
Immunogen:	Peptide sequence around phosphorylation site of tyrosine 397(G-D-Y(p)-E-E) derived from Human HS1 (KLH-conjugated)
Specificity:	The antibody detects endogenous levels of HS1 only when phosphorylated at tyrosine 397.
Formulation:	Rabbit IgG in phosphate buffered saline (without Mg <sup>2+</sup> and Ca <sup>2+</sup> ), pH 7.4, 150mM NaCl, 0.02% sodium azide and 50% glycerol State: Aff - Purified State: Liquid Ig fraction
Concentration:	lot specific
Purification:	Affinity chromatography using epitope-specific peptide
Conjugation:	Unconjugated
Storage:	Upon receipt, store undiluted (in aliquots) at -20°C. Avoid repeated freezing and thawing.
Stability:	Shelf life: one year from despatch.
Predicted Protein Size:	54 kDa
Gene Name:	hematopoietic cell-specific Lyn substrate 1
Database Link:	<a href="#">Entrez Gene 3059 Human P14317</a>
Background:	Substrate of the antigen receptor-coupled tyrosine kinase. Plays a role in antigen receptor signaling for both clonal expansion and deletion in lymphoid cells. Directly associates with HAX-1, through binding to its C-terminal region. May also be involved in the regulation of gene expression.
Synonyms:	LckBP1



[View online »](#)

## Product images:



Western blot analysis of extracts from JK cells (Lane 2), using HS1 (Phospho-Tyr397) Antibody. The lane on the left is treated with antigen-specific peptide.