

## Product datasheet for **AP55833PU-S**

### **TOB (TOB1) pSer164 Rabbit Polyclonal Antibody**

#### **Product data:**

<b>Product Type:</b>	Primary Antibodies
<b>Applications:</b>	IHC, WB
<b>Recommended Dilution:</b>	Western blot: 1:500~1:1000. Immunohistochemistry on paraffin sections: 1:50~1:100.
<b>Reactivity:</b>	Human, Mouse, Rat
<b>Host:</b>	Rabbit
<b>Clonality:</b>	Polyclonal
<b>Immunogen:</b>	Peptide sequence around phosphorylation site of Serine 164(A-V-S(p)-P-T) derived from Human TOB1 (KLH-conjugated)
<b>Specificity:</b>	The antibody detects endogenous levels of TOB1 only when phosphorylated at serine 164.
<b>Formulation:</b>	Rabbit IgG in phosphate buffered saline (without Mg <sup>2+</sup> and Ca <sup>2+</sup> ), pH 7.4, 150mM NaCl, 0.02% sodium azide and 50% glycerol State: Aff - Purified State: Liquid Ig fraction
<b>Concentration:</b>	lot specific
<b>Purification:</b>	Affinity chromatography using epitope-specific peptide
<b>Conjugation:</b>	Unconjugated
<b>Storage:</b>	Upon receipt, store undiluted (in aliquots) at -20°C. Avoid repeated freezing and thawing.
<b>Stability:</b>	Shelf life: one year from despatch.
<b>Predicted Protein Size:</b>	40 kDa
<b>Gene Name:</b>	transducer of ERBB2, 1
<b>Database Link:</b>	<a href="#">Entrez Gene 10140 Human P50616</a>



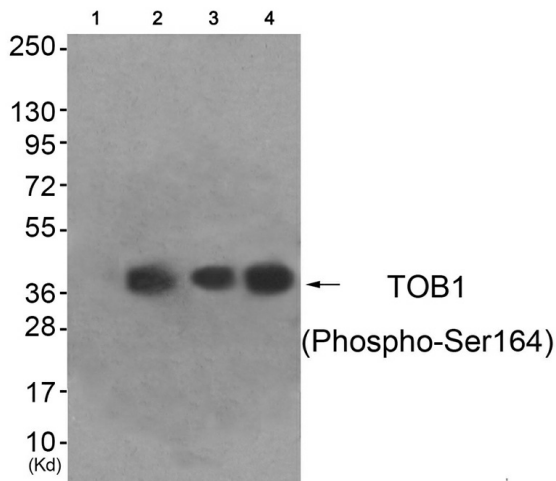
[View online »](#)

**Background:**

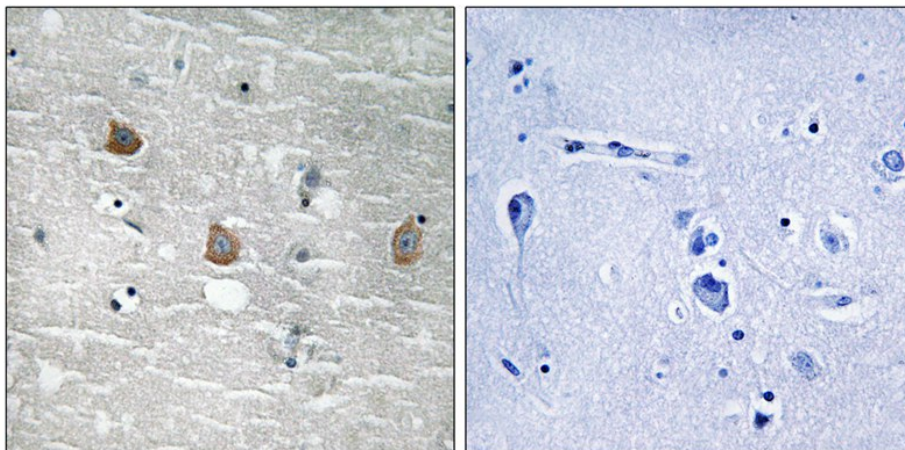
This gene encodes a member of the tob/btg1 family of anti-proliferative proteins that have the potential to regulate cell growth. When exogenously expressed, this protein suppresses cell growth in tissue culture. The protein undergoes phosphorylation by a serine/threonine kinase, 90 kDa ribosomal S6 kinase. Interactions of this protein with the v-erb-b2 erythroblastic leukemia viral oncogene homolog 2 gene product p185 interferes with growth suppression. This protein inhibits T cell proliferation and transcription of cytokines and cyclins. The protein interacts with both mothers against decapentaplegic Drosophila homolog 2 and 4 to enhance their DNA binding activity. This interaction inhibits interleukin 2 transcription in T cells.

**Synonyms:**

TOB, TROB1

**Product images:**


Western blot analysis of extracts from HeLa cells (Lane 2), A549 cells (Lane 3) and HepG2 cells (Lane 4), using TOB1 (Phospho-Ser164) Antibody. The lane on the left is treated with antigen-specific peptide.



Immunohistochemical analysis of paraffin-embedded human brain tissue using TOB1 (Phospho-Ser164) Antibody (left) or the same antibody preincubated with blocking peptide (right).