

Product datasheet for **AP55832PU-N**

KAT5 pSer90 Rabbit Polyclonal Antibody

Product data:

Product Type:	Primary Antibodies
Applications:	IHC
Recommended Dilution:	Immunohistochemistry on paraffin sections: 1:50~1:100.
Reactivity:	Human, Mouse, Rat
Host:	Rabbit
Clonality:	Polyclonal
Immunogen:	Peptide sequence around phosphorylation site of Serine 90(P-G-S(p)-P-E) derived from Human Tip60 (KLH-conjugated)
Specificity:	The antibody detects endogenous levels of Tip60 only when phosphorylated at serine 90.
Formulation:	Rabbit IgG in phosphate buffered saline (without Mg ²⁺ and Ca ²⁺), pH 7.4, 150mM NaCl, 0.02% sodium azide and 50% glycerol State: Aff - Purified State: Liquid Ig fraction
Concentration:	lot specific
Purification:	Affinity chromatography using epitope-specific peptide
Conjugation:	Unconjugated
Storage:	Upon receipt, store undiluted (in aliquots) at -20°C. Avoid repeated freezing and thawing.
Stability:	Shelf life: one year from despatch.
Predicted Protein Size:	58 kDa
Gene Name:	lysine acetyltransferase 5
Database Link:	Entrez Gene 10524 Human Q92993



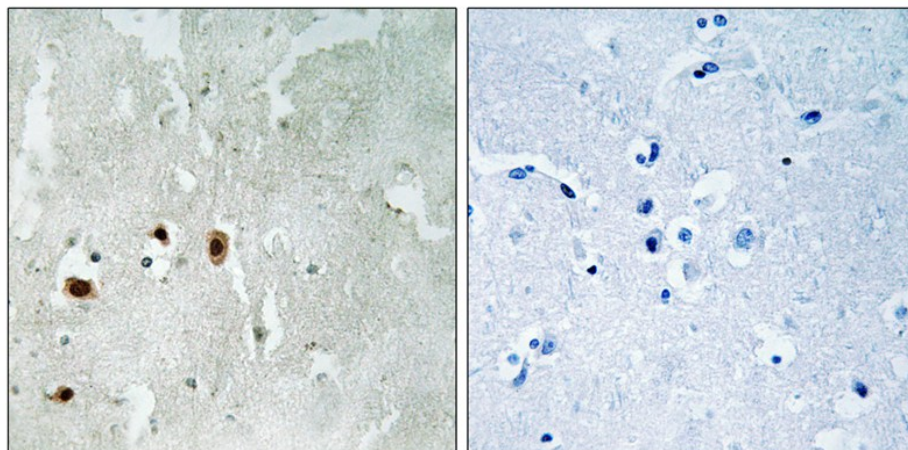
[View online »](#)

Background:

The protein encoded by this gene belongs to the MYST family of histone acetyl transferases (HATs) and was originally isolated as an HIV-1 TAT-interactive protein. HATs play important roles in regulating chromatin remodeling, transcription and other nuclear processes by acetylating histone and nonhistone proteins. This protein is a histone acetylase that has a role in DNA repair and apoptosis and is thought to play an important role in signal transduction. Alternative splicing of this gene results in multiple transcript variants.

Synonyms:

HTATIP, TIP60, PLIP

Product images:

Immunohistochemical analysis of paraffin-embedded human brain tissue using Tip60 (Phospho-Ser90) antibody (left) or the same antibody preincubated with blocking peptide (right).