

## Product datasheet for **AP55831PU-N**

### TAL1 pSer122 Rabbit Polyclonal Antibody

#### Product data:

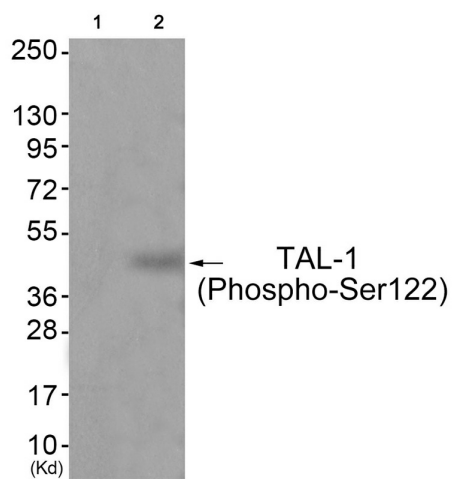
Product Type:	Primary Antibodies
Applications:	WB
Recommended Dilution:	<b>Western blot:</b> 1:500~1:1000.
Reactivity:	Human, Rat
Host:	Rabbit
Clonality:	Polyclonal
Immunogen:	Peptide sequence around phosphorylation site of Serine 122(Q-L-S(p)-P-P) derived from Human TAL-1 (KLH-conjugated)
Specificity:	The antibody detects endogenous levels of TAL-1 only when phosphorylated at serine 122.
Formulation:	Rabbit IgG in phosphate buffered saline (without Mg <sup>2+</sup> and Ca <sup>2+</sup> ), pH 7.4, 150mM NaCl, 0.02% sodium azide and 50% glycerol State: Aff - Purified State: Liquid Ig fraction
Concentration:	lot specific
Purification:	Affinity chromatography using epitope-specific peptide
Conjugation:	Unconjugated
Storage:	Upon receipt, store undiluted (in aliquots) at -20°C. Avoid repeated freezing and thawing.
Stability:	Shelf life: one year from despatch.
Predicted Protein Size:	45 kDa
Gene Name:	T-cell acute lymphocytic leukemia 1
Database Link:	<a href="#">Entrez Gene 6886 Human P17542</a>
Background:	TAL-1 is a basic helix-loop-helix transcription. Regulates differentiation and survival during hemopoiesis. Implicated in the genesis of hemopoietic malignancies. It may play an important role in hemopoietic differentiation. Serves as a positive regulator of erythroid differentiation. Mutations are associated with T-cell leukemia and melanoma. Binds to the LIM domain containing protein Rhombotin-2.



[View online »](#)

Synonyms: TAL-1, SCL, TCL5

### Product images:



Western blot analysis of extracts from JK cells (Lane 2), using TAL-1 (Phospho-Ser122) Antibody. The lane on the left is treated with antigen-specific peptide.