

Product datasheet for **AP55827PU-S**

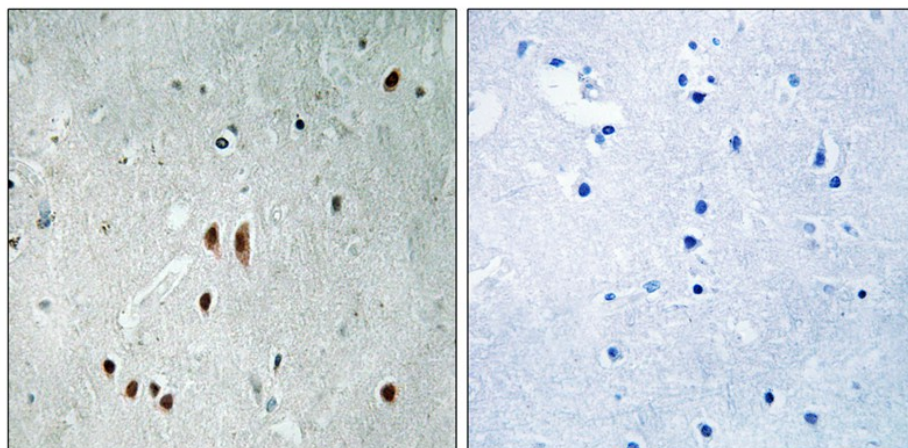
CNOT2 pSer101 Rabbit Polyclonal Antibody

Product data:

Product Type:	Primary Antibodies
Applications:	IHC
Recommended Dilution:	Immunohistochemistry on paraffin sections: 1:50~1:100.
Reactivity:	Human, Mouse, Rat
Host:	Rabbit
Clonality:	Polyclonal
Immunogen:	Peptide sequence around phosphorylation site of Serine101(S-L-S(p)-Q-G) derived from Human CNOT2 (KLH-conjugated)
Specificity:	The antibody detects endogenous levels of CNOT2 only when phosphorylated at serine 101.
Formulation:	Rabbit IgG in phosphate buffered saline (without Mg ²⁺ and Ca ²⁺), pH 7.4, 150mM NaCl, 0.02% sodium azide and 50% glycerol State: Aff - Purified State: Liquid Ig fraction
Concentration:	lot specific
Purification:	Affinity chromatography using epitope-specific peptide
Conjugation:	Unconjugated
Storage:	Upon receipt, store undiluted (in aliquots) at -20°C. Avoid repeated freezing and thawing.
Stability:	Shelf life: one year from despatch.
Predicted Protein Size:	59 kDa
Gene Name:	CCR4-NOT transcription complex subunit 2
Database Link:	Entrez Gene 4848 Human Q9NZN8
Background:	The CCR4-NOT complex functions as general transcription regulation complex. Subunit of the CCR4-NOT core complex that contains CHAF1A, CHAF1B, CNOT1, CNOT2, CNOT3, CNOT4, CNOT6 and CNOT8. 5 isoforms of the human protein are produced by alternative splicing.
Synonyms:	CDC36, NOT2, HSPC131, MSTP046



[View online »](#)

Product images:

Immunohistochemical analysis of paraffin-embedded human brain tissue using CNOT2 (Phospho-Ser101) Antibody (left) or the same antibody preincubated with blocking peptide (right).