

## Product datasheet for **AP55827PU-N**

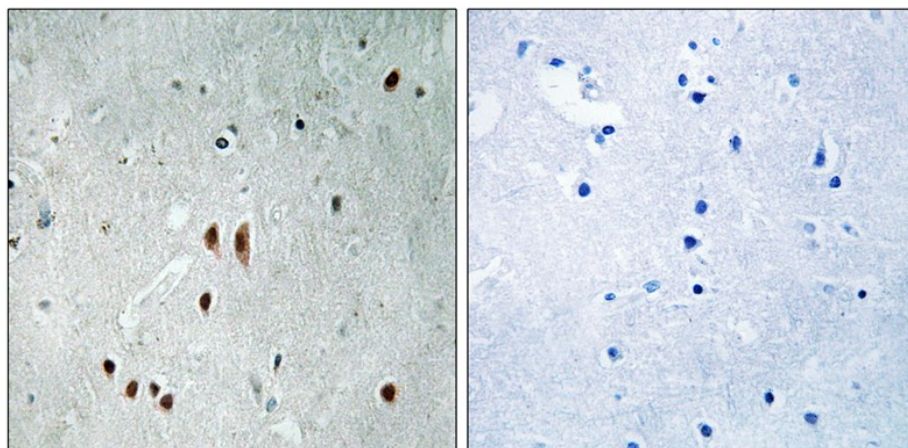
### CNOT2 pSer101 Rabbit Polyclonal Antibody

#### Product data:

|                         |   |
|-------------------------|---|
| Product Type:           | Primary Antibodies  |
| Applications:           | IHC   |
| Recommended Dilution:   | <b>Immunohistochemistry on paraffin sections:</b> 1:50~1:100.   |
| Reactivity:             | Human, Mouse, Rat   |
| Host:                   | Rabbit  |
| Clonality:              | Polyclonal  |
| Immunogen:              | Peptide sequence around phosphorylation site of Serine101(S-L-S(p)-Q-G) derived from Human CNOT2 (KLH-conjugated)   |
| Specificity:            | The antibody detects endogenous levels of CNOT2 only when phosphorylated at serine 101.   |
| Formulation:            | Rabbit IgG in phosphate buffered saline (without Mg <sup>2+</sup> and Ca <sup>2+</sup> ), pH 7.4, 150mM NaCl, 0.02% sodium azide and 50% glycerol<br>State: Aff - Purified<br>State: Liquid Ig fraction   |
| Concentration:          | lot specific  |
| Purification:           | Affinity chromatography using epitope-specific peptide  |
| Conjugation:            | Unconjugated  |
| Storage:                | Upon receipt, store undiluted (in aliquots) at -20°C.<br>Avoid repeated freezing and thawing.   |
| Stability:              | Shelf life: one year from despatch.   |
| Predicted Protein Size: | 59 kDa  |
| Gene Name:              | CCR4-NOT transcription complex subunit 2  |
| Database Link:          | <a href="#">Entrez Gene 4848 Human Q9NZN8</a>   |
| Background:             | The CCR4-NOT complex functions as general transcription regulation complex. Subunit of the CCR4-NOT core complex that contains CHAF1A, CHAF1B, CNOT1, CNOT2, CNOT3, CNOT4, CNOT6 and CNOT8. 5 isoforms of the human protein are produced by alternative splicing. |
| Synonyms:               | CDC36, NOT2, HSPC131, MSTP046   |



[View online >](#)

**Product images:**

Immunohistochemical analysis of paraffin-embedded human brain tissue using CNOT2 (Phospho-Ser101) antibody (left) or the same antibody preincubated with blocking peptide (right).