

## Product datasheet for **AP55826PU-N**

### NEUROD1 pSer274 Rabbit Polyclonal Antibody

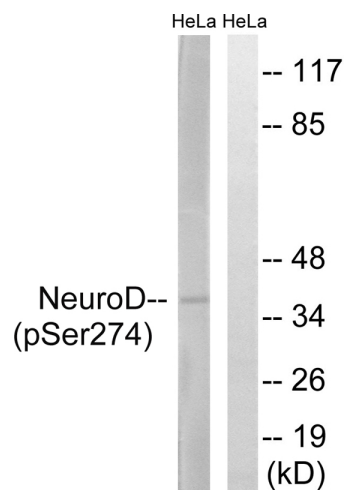
#### Product data:

Product Type:	Primary Antibodies
Applications:	WB
Recommended Dilution:	Western blot: 1:500~1:1000.
Reactivity:	Human, Mouse, Rat
Host:	Rabbit
Clonality:	Polyclonal
Immunogen:	Peptide sequence around phosphorylation site of Serine 274(P-L-S(p)-P-P) derived from Human Neuro D (KLH-conjugated)
Specificity:	The antibody detects endogenous levels of Neuro D only when phosphorylated at serine 274.
Formulation:	Rabbit IgG in phosphate buffered saline (without Mg <sup>2+</sup> and Ca <sup>2+</sup> ), pH 7.4, 150mM NaCl, 0.02% sodium azide and 50% glycerol State: Aff - Purified State: Liquid Ig fraction
Concentration:	lot specific
Purification:	Affinity chromatography using epitope-specific peptide
Conjugation:	Unconjugated
Storage:	Upon receipt, store undiluted (in aliquots) at -20°C. Avoid repeated freezing and thawing.
Stability:	Shelf life: one year from despatch.
Predicted Protein Size:	36 kDa
Gene Name:	neuronal differentiation 1
Database Link:	<a href="#">Entrez Gene 4760 Human Q13562</a>
Background:	NeuroD Acts as a differentiation factor during neurogenesis. Transcriptional activator. Binds to the insulin gene E-box.
Synonyms:	NEUROD1, NEUROD



[View online »](#)

## Product images:



Western blot analysis of extracts from HeLa cells treated with UV using Neuro D (Phospho-Ser274) Antibody. The lane on the right is treated with the antigen-specific peptide.