

Product datasheet for **AP55825PU-N**

MEF2C pSer396 Rabbit Polyclonal Antibody

Product data:

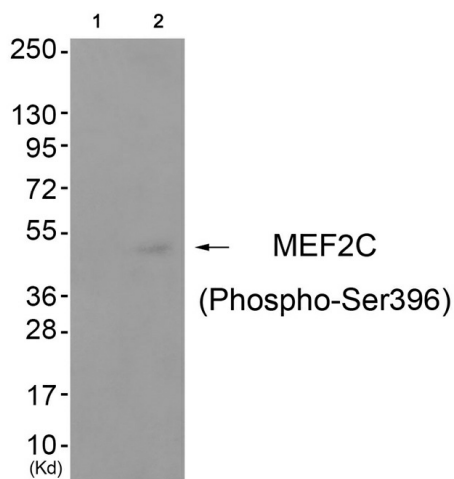
Product Type:	Primary Antibodies
Applications:	IHC, WB
Recommended Dilution:	Western blot: 1:500~1:1000. Immunohistochemistry on paraffin sections 1:50~1:100.
Reactivity:	Human, Mouse
Host:	Rabbit
Clonality:	Polyclonal
Immunogen:	Peptide sequence around phosphorylation site of Serine 396(P-V-S(p)-P-P) derived from Human MEF2C (KLH-conjugated)
Specificity:	The antibody detects endogenous levels of MEF2C only when phosphorylated at serine 396.
Formulation:	Rabbit IgG in phosphate buffered saline (without Mg ²⁺ and Ca ²⁺), pH 7.4, 150mM NaCl, 0.02% sodium azide and 50% glycerol State: Aff - Purified State: Liquid Ig fraction
Concentration:	lot specific
Purification:	Affinity chromatography using epitope-specific peptide
Conjugation:	Unconjugated
Storage:	Upon receipt, store undiluted (in aliquots) at -20°C. Avoid repeated freezing and thawing.
Stability:	Shelf life: one year from despatch.
Predicted Protein Size:	51 kDa
Gene Name:	myocyte enhancer factor 2C
Database Link:	Entrez Gene 4208 Human Q06413
Background:	MEF2C transcription factor of the MADS family which binds specifically to the MEF2 element present in the regulatory regions of many muscle-specific genes. May be involved in myogenesis, neurogenesis and in the development of cortical architecture. Three splice-variant isoforms have been described.



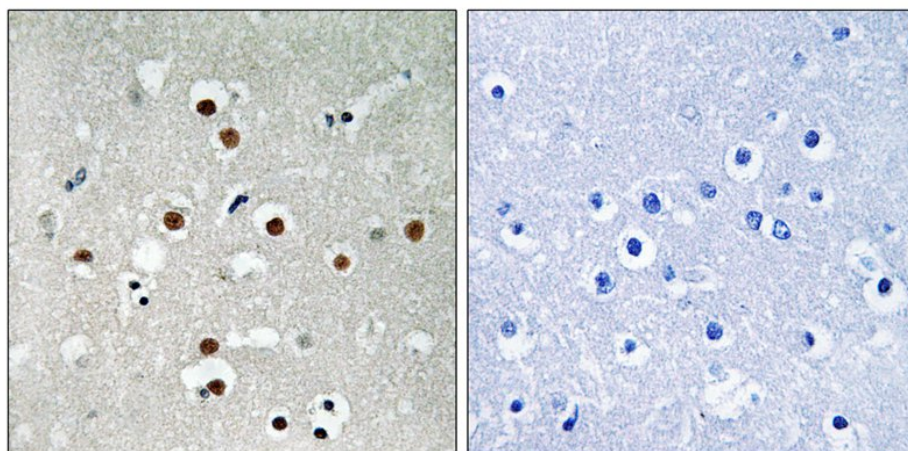
[View online »](#)

Synonyms: Myocyte-specific enhancer factor 2C

Product images:



Western blot analysis of extracts from cos-7 cells (Lane 2), using MEF2C (Phospho-Ser396) Antibody. The lane on the left is treated with antigen-specific peptide.



Immunohistochemical analysis of paraffin-embedded human brain tissue using MEF2C (Phospho-Ser396) antibody (left) or the same antibody preincubated with blocking peptide (right).