

## Product datasheet for **AP55824PU-N**

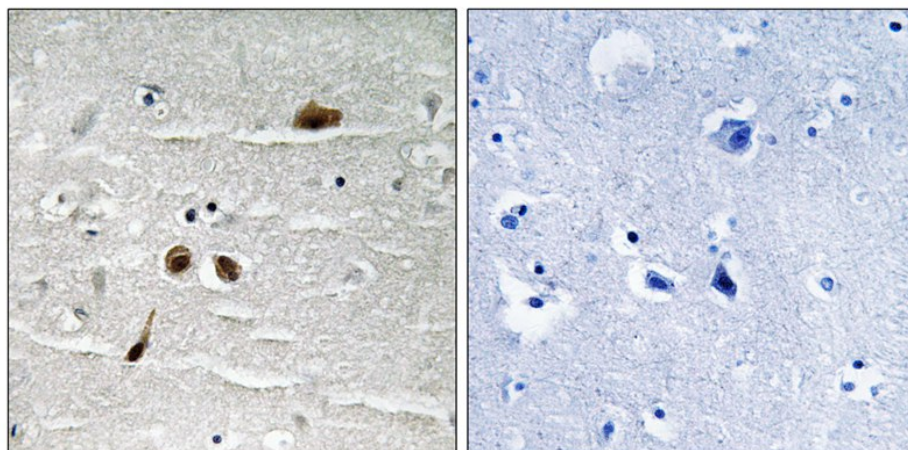
### MDC1 pSer513 Rabbit Polyclonal Antibody

#### Product data:

Product Type:	Primary Antibodies
Applications:	IHC
Recommended Dilution:	<b>Immunohistochemistry on paraffin sections:</b> 1:50~1:100.
Reactivity:	Human
Host:	Rabbit
Clonality:	Polyclonal
Immunogen:	Peptide sequence around phosphorylation site of Serine 513(E-R-S(p)-Q-A) derived from Human MDC1 (KLH-conjugated)
Specificity:	The antibody detects endogenous levels of MDC1 only when phosphorylated at serine 513.
Formulation:	Rabbit IgG in phosphate buffered saline (without Mg <sup>2+</sup> and Ca <sup>2+</sup> ), pH 7.4, 150mM NaCl, 0.02% sodium azide and 50% glycerol State: Aff - Purified State: Liquid Ig fraction
Concentration:	lot specific
Purification:	Affinity chromatography using epitope-specific peptide
Conjugation:	Unconjugated
Storage:	Upon receipt, store undiluted (in aliquots) at -20°C. Avoid repeated freezing and thawing.
Stability:	Shelf life: one year from despatch.
Predicted Protein Size:	226 kDa
Gene Name:	mediator of DNA damage checkpoint 1
Database Link:	<a href="#">Entrez Gene 9656 Human Q14676</a>
Background:	The MDC1 protein contains a forkhead homology-associated (FHA) domain and 2 BRCA1 (MIM 113705) C-terminal motifs (BRCTs) and is required for the intra-S-phase DNA damage checkpoint.
Synonyms:	MDC1, KIAA0170, NFBD1



[View online »](#)

**Product images:**

Immunohistochemical analysis of paraffin-embedded human brain tissue using MDC1 (Phospho-Ser513) antibody (left) or the same antibody preincubated with blocking peptide (right).