

## Product datasheet for **AP55823PU-N**

### MAPKAP Kinase 2 (MAPKAPK2) pSer272 Rabbit Polyclonal Antibody

#### Product data:

Product Type:	Primary Antibodies
Applications:	IHC, WB
Recommended Dilution:	<b>Western blot:</b> 1:500~1:1000. <b>Immunohistochemistry on paraffin sections:</b> 1:50~1:100.
Reactivity:	Human, Mouse, Rat
Host:	Rabbit
Clonality:	Polyclonal
Immunogen:	Peptide sequence around phosphorylation site of Serine 272(A-I-S(p)-P-G) derived from Human MAPKAPK2 (KLH-conjugated)
Specificity:	The antibody detects endogenous levels of MAPKAPK2 only when phosphorylated at serine 272.
Formulation:	Rabbit IgG in phosphate buffered saline (without Mg <sup>2+</sup> and Ca <sup>2+</sup> ), pH 7.4, 150mM NaCl, 0.02% sodium azide and 50% glycerol State: Aff - Purified State: Liquid Ig fraction
Concentration:	lot specific
Purification:	Affinity chromatography using epitope-specific peptide
Conjugation:	Unconjugated
Storage:	Upon receipt, store undiluted (in aliquots) at -20°C. Avoid repeated freezing and thawing.
Stability:	Shelf life: one year from despatch.
Predicted Protein Size:	45 kDa
Gene Name:	mitogen-activated protein kinase-activated protein kinase 2
Database Link:	<a href="#">Entrez Gene 9261 Human P49137</a>



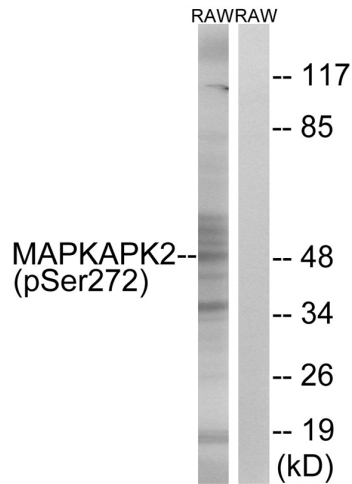
[View online »](#)

**Background:**

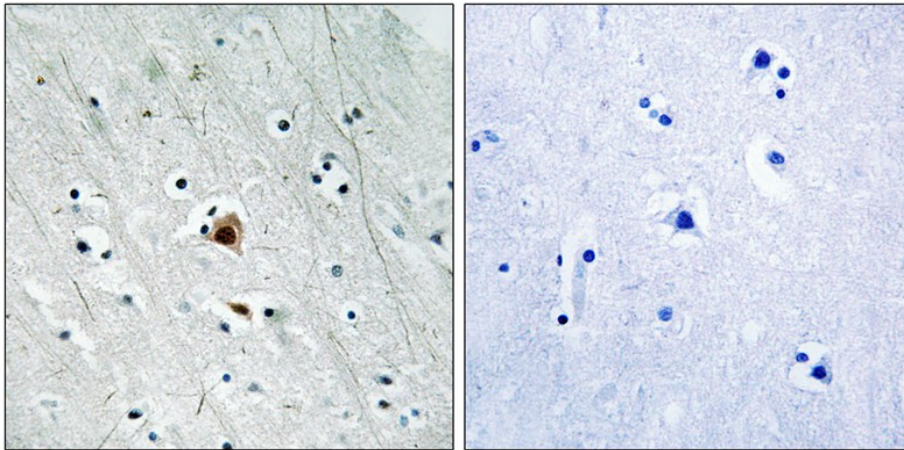
This gene encodes a member of the Ser/Thr protein kinase family. This kinase is regulated through direct phosphorylation by p38 MAP kinase. In conjunction with p38 MAP kinase, this kinase is known to be involved in many cellular processes including stress and inflammatory responses, nuclear export, gene expression regulation and cell proliferation. Heat shock protein HSP27 was shown to be one of the substrates of this kinase in vivo. Two transcript variants encoding two different isoforms have been found for this gene.

**Synonyms:**

MAPK-activated protein kinase 2, MAPKAP kinase 2, MAPKAPK-2, MK2, MAPKAPK2

**Product images:**


Western blot analysis of extracts from RAW264.7 cells treated with UV using MAPKAPK2 (Phospho-Ser272) Antibody. The lane on the right is treated with the antigen-specific peptide.



Immunohistochemical analysis of paraffin-embedded human brain tissue using MAPKAPK2 (Phospho-Ser272) antibody (left) or the same antibody preincubated with blocking peptide (right).