

Product datasheet for **AP55822PU-S**

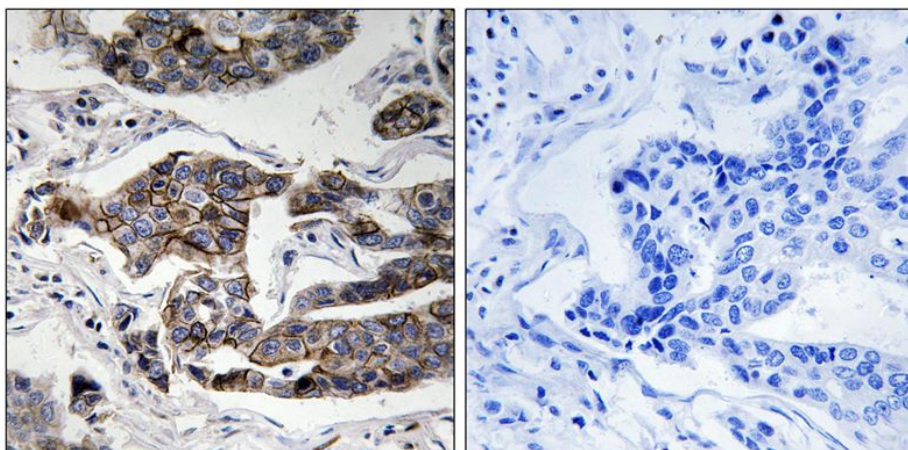
Girdin (CCDC88A) pSer1417 Rabbit Polyclonal Antibody

Product data:

Product Type:	Primary Antibodies
Applications:	IHC
Recommended Dilution:	Immunohistochemistry on paraffin sections: 1:50~1:100.
Reactivity:	Human, Mouse
Host:	Rabbit
Clonality:	Polyclonal
Immunogen:	Peptide sequence around phosphorylation site of Serine 417(L-E-M(p)-A-Q) derived from Human Girdin (KLH-conjugated)
Specificity:	The antibody detects endogenous levels of Girdin only when phosphorylated at serine 1417.
Formulation:	Rabbit IgG in phosphate buffered saline (without Mg ²⁺ and Ca ²⁺), pH 7.4, 150mM NaCl, 0.02% sodium azide and 50% glycerol State: Aff - Purified State: Liquid Ig fraction
Concentration:	lot specific
Purification:	Affinity chromatography using epitope-specific peptide
Conjugation:	Unconjugated
Storage:	Upon receipt, store undiluted (in aliquots) at -20°C. Avoid repeated freezing and thawing.
Stability:	Shelf life: one year from despatch.
Predicted Protein Size:	216 kDa
Gene Name:	coiled-coil domain containing 88A
Database Link:	Entrez Gene 55704 Human Q3V6T2
Background:	girdin IS a ubiquitously expressed actin binding protein that plays an important role in the formation of stress fibers and lamellipodia. Subsequent to phosphorylation by Akt, Girdin accumulates at the leading edge of migrating cells and appears to be crucial for the integrity of the actin cytoskeleton and for cell migration.
Synonyms:	CCDC88A, APE, GRDN, KIAA1212, GIV, HkRP1



[View online »](#)

Product images:

Immunohistochemical analysis of paraffin-embedded human breast carcinoma tissue using Girdin (Phospho-Ser1417) Antibody (left) or the same antibody preincubated with blocking peptide (right).