

Product datasheet for **AP55819PU-S**

Estrogen Receptor 1 (ESR1) pSer102 Rabbit Polyclonal Antibody

Product data:

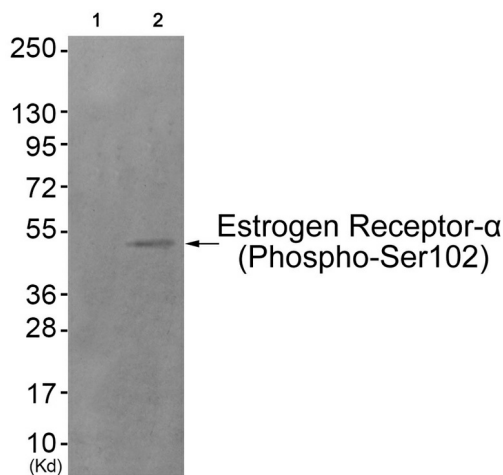
Product Type:	Primary Antibodies
Applications:	IHC, WB
Recommended Dilution:	Western blot: 1:500~1:1000. Immunohistochemistry on paraffin sections: 1:50~1:100.
Reactivity:	Human, Mouse, Rat
Host:	Rabbit
Clonality:	Polyclonal
Immunogen:	Peptide sequence around phosphorylation site of Serine102(L-N-S(p)-V-S) derived from Human Estrogen Receptor- α (KLH-conjugated)
Specificity:	The antibody detects endogenous levels of Estrogen Receptor- α only when phosphorylated at serine 102.
Formulation:	Rabbit IgG in phosphate buffered saline (without Mg ²⁺ and Ca ²⁺), pH 7.4, 150mM NaCl, 0.02% sodium azide and 50% glycerol State: Aff - Purified State: Liquid Ig fraction
Concentration:	lot specific
Purification:	Affinity chromatography using epitope-specific peptide
Conjugation:	Unconjugated
Storage:	Upon receipt, store undiluted (in aliquots) at -20°C. Avoid repeated freezing and thawing.
Stability:	Shelf life: one year from despatch.
Predicted Protein Size:	53 kDa
Gene Name:	estrogen receptor 1
Database Link:	Entrez Gene 2099 Human P03372
Background:	Nuclear hormone receptor. The steroid hormones and their receptors are involved in the regulation of eukaryotic gene expression and affect cellular proliferation and differentiation in target tissues.



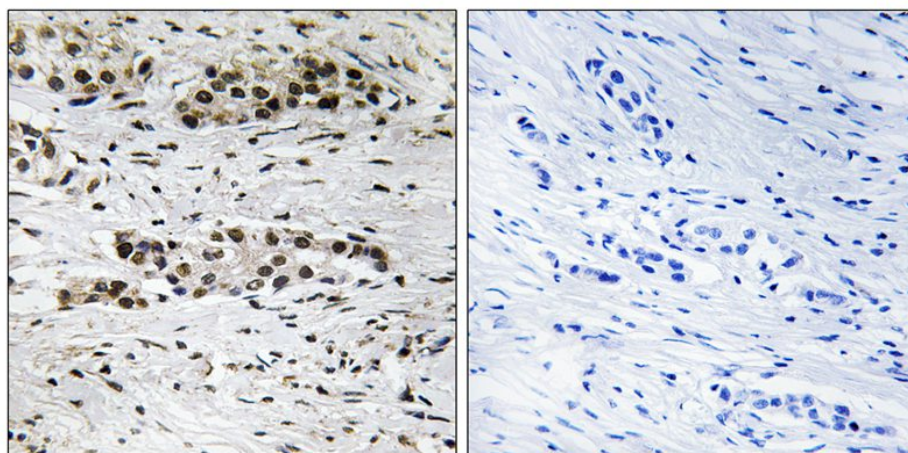
[View online »](#)

Synonyms: ER alpha, Estradiol receptor, ESR1, ESR, NR3A1

Product images:



Western blot analysis of extracts from HuvEc cells (Lane 2), using Estrogen Receptor-α (Phospho-Ser102) Antibody. The lane on the left is treated with antigen-specific peptide.



Immunohistochemical analysis of paraffin-embedded human breast carcinoma tissue using Estrogen Receptor-α (Phospho-Ser102) Antibody (left) or the same antibody preincubated with blocking peptide (right).