

Product datasheet for **AP55818PU-S**

EPS15 pTyr849 Rabbit Polyclonal Antibody

Product data:

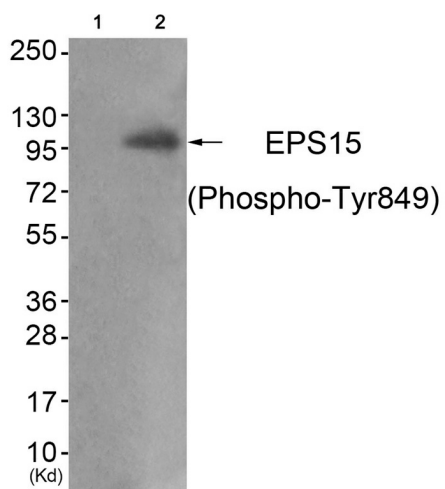
Product Type:	Primary Antibodies
Applications:	WB
Recommended Dilution:	Western blot: 1:500~1:1000.
Reactivity:	Human, Mouse, Rat
Host:	Rabbit
Clonality:	Polyclonal
Immunogen:	Peptide sequence around phosphorylation site of tyrosine 849 (S-A-Y(p)-P-S) derived from Human Ephrin EPS15 (KLH-conjugated)
Specificity:	The antibody detects endogenous levels of EPS15 only when phosphorylated at tyrosine 849.
Formulation:	Rabbit IgG in phosphate buffered saline (without Mg ²⁺ and Ca ²⁺), pH 7.4, 150mM NaCl, 0.02% sodium azide and 50% glycerol State: Aff - Purified State: Liquid Ig fraction
Concentration:	lot specific
Purification:	Affinity chromatography using epitope-specific peptide
Conjugation:	Unconjugated
Storage:	Upon receipt, store undiluted (in aliquots) at -20°C. Avoid repeated freezing and thawing.
Stability:	Shelf life: one year from despatch.
Predicted Protein Size:	100 kDa
Gene Name:	epidermal growth factor receptor pathway substrate 15
Database Link:	Entrez Gene 2060 Human P42566
Background:	This gene encodes a protein that is part of the EGFR pathway. The protein is present at clatherin-coated pits and is involved in receptor-mediated endocytosis of EGF. Notably, this gene is rearranged with the HRX/ALL/MLL gene in acute myelogenous leukemias. Alternate transcriptional splice variants of this gene have been observed but have not been thoroughly characterized.



[View online »](#)

Synonyms: Protein AF-1p

Product images:



Western blot analysis of extracts from JK cells (Lane 2), using EPS15 (Phospho-Tyr849) Antibody. The lane on the left is treated with antigen-specific peptide.