

## Product datasheet for **AP55817PU-N**

### EPB41 pTyr660/418 Rabbit Polyclonal Antibody

#### Product data:

|                         |   |
|-------------------------|---|
| Product Type:           | Primary Antibodies  |
| Applications:           | WB  |
| Recommended Dilution:   | <b>Western blot:</b> 1:500~1:1000.  |
| Reactivity:             | Human, Mouse  |
| Host:                   | Rabbit  |
| Clonality:              | Polyclonal  |
| Immunogen:              | Peptide sequence around phosphorylation site of tyrosine 660/418 (N-I-Y(p)-I-R) derived from Human EPB41 (KLH-conjugated)   |
| Specificity:            | The antibody detects endogenous levels of EPB41 only when phosphorylated at tyrosine 660/418.   |
| Formulation:            | Rabbit IgG in phosphate buffered saline (without Mg <sup>2+</sup> and Ca <sup>2+</sup> ), pH 7.4, 150mM NaCl, 0.02% sodium azide and 50% glycerol<br>State: Aff - Purified<br>State: Liquid Ig fraction |
| Concentration:          | lot specific  |
| Purification:           | Affinity chromatography using epitope-specific peptide  |
| Conjugation:            | Unconjugated  |
| Storage:                | Upon receipt, store undiluted (in aliquots) at -20°C.<br>Avoid repeated freezing and thawing.   |
| Stability:              | Shelf life: one year from despatch.   |
| Predicted Protein Size: | 60 kDa  |
| Gene Name:              | erythrocyte membrane protein band 4.1   |
| Database Link:          | <a href="#">Entrez Gene 2035 Human P11171</a>   |



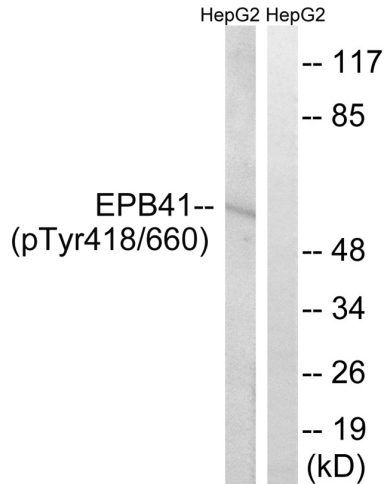
[View online »](#)

**Background:**

Elliptocytosis is a hematologic disorder characterized by elliptically shaped erythrocytes and a variable degree of hemolytic anemia. Inherited as an autosomal dominant, elliptocytosis results from mutation in any one of several genes encoding proteins of the red cell membrane skeleton. The form discussed here is the one found in the 1950s to be linked to Rh blood group and more recently shown to be caused by a defect in protein 4.1. 'Rh-unlinked' forms of elliptocytosis are caused by mutation in the alpha-spectrin gene, the beta-spectrin gene, or the band 3 gene.

**Synonyms:**

Band 4.1, P4.1, EPB4.1, 4.1R, E41P

**Product images:**


Western blot analysis of extracts from HepG2 cells treated with PMA using EPB41 (Phospho-Tyr660/418) Antibody. The lane on the right is treated with the antigen-specific peptide.