

Product datasheet for **AP55816PU-S**

TCF3 / E2A (TCF3) pThr355 Rabbit Polyclonal Antibody

Product data:

Product Type:	Primary Antibodies
Applications:	IHC
Recommended Dilution:	Immunohistochemistry on paraffin sections: 1:50~1:100.
Reactivity:	Human, Mouse, Rat
Host:	Rabbit
Clonality:	Polyclonal
Immunogen:	Peptide sequence around phosphorylation site of threonine 355 (P-S-T(p)-P-V) derived from Human E2A (KLH-conjugated)
Specificity:	The antibody detects endogenous levels of E2A only when phosphorylated at threonine 355.
Formulation:	Rabbit IgG in phosphate buffered saline (without Mg ²⁺ and Ca ²⁺), pH 7.4, 150mM NaCl, 0.02% sodium azide and 50% glycerol State: Aff - Purified State: Liquid Ig fraction
Concentration:	lot specific
Purification:	Affinity chromatography using epitope-specific peptide
Conjugation:	Unconjugated
Storage:	Upon receipt, store undiluted (in aliquots) at -20°C. Avoid repeated freezing and thawing.
Stability:	Shelf life: one year from despatch.
Predicted Protein Size:	67 kDa
Gene Name:	transcription factor 3
Database Link:	Entrez Gene 6929 Human P15923



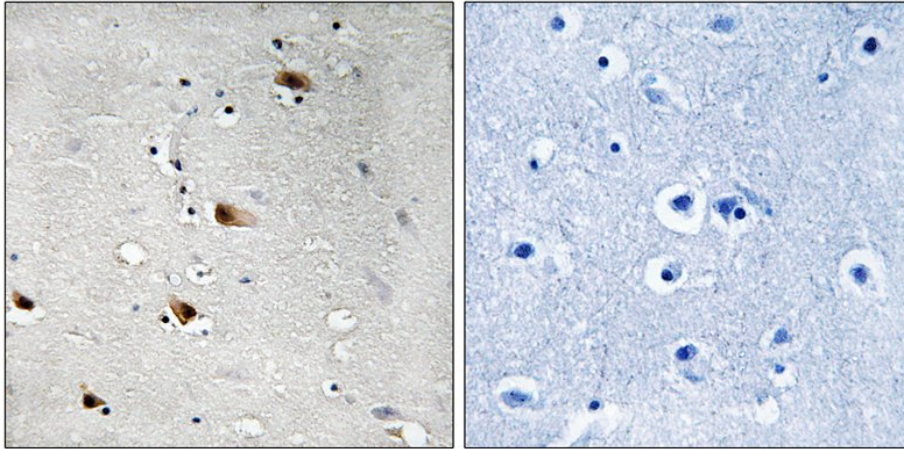
[View online »](#)

Background:

E2A is a transcription factor that plays major roles in determining tissue-specific cell fate during embryogenesis, like muscle or early B-cell differentiation. Heterodimers between E2A and tissue-specific basic helix-loop-helix (bHLH) Dimers bind DNA on E-box motifs: 5'-CANNTG-3'. Binds to the kappa-E2 site in the kappa immunoglobulin gene enhancer. Deletions in E2A have been observed in a subset of pre-B-cell acute lymphoblastic leukemia (B-ALL) cases. Two alternatively spliced human isoforms have been described.

Synonyms:

Transcription factor 3, TCF-3, Transcription factor E2-alpha, ITF1, ITF-1

Product images:

Immunohistochemical analysis of paraffin-embedded human brain tissue using E2A (Phospho-Thr355) Antibody (left) or the same antibody preincubated with blocking peptide (right).