

Product datasheet for **AP55812PU-N**

Claudin 7 (CLDN7) pTyr210 Rabbit Polyclonal Antibody

Product data:

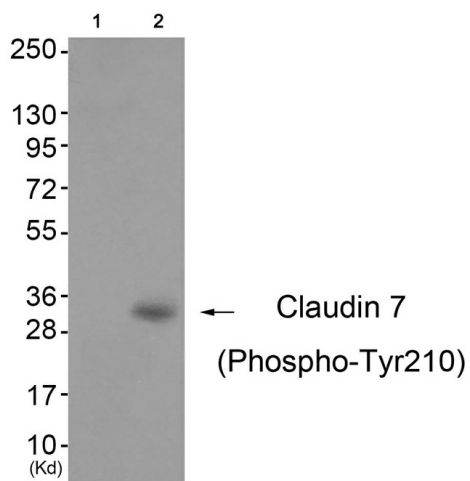
Product Type:	Primary Antibodies
Applications:	WB
Recommended Dilution:	Western blot: 1:500~1:1000.
Reactivity:	Human, Mouse, Rat
Host:	Rabbit
Clonality:	Polyclonal
Immunogen:	Peptide sequence around phosphorylation site of tyrosine 210 (S-K-E-Y(p)-V) derived from Human Claudin 7 (KLH-conjugated)
Specificity:	The antibody detects endogenous levels of Claudin 7 only when phosphorylated at tyrosine 210.
Formulation:	Rabbit IgG in phosphate buffered saline (without Mg ²⁺ and Ca ²⁺), pH 7.4, 150mM NaCl, 0.02% sodium azide and 50% glycerol State: Aff - Purified State: Liquid Ig fraction
Concentration:	lot specific
Purification:	Affinity chromatography using epitope-specific peptide
Conjugation:	Unconjugated
Storage:	Upon receipt, store undiluted (in aliquots) at -20°C. Avoid repeated freezing and thawing.
Stability:	Shelf life: one year from despatch.
Predicted Protein Size:	32 kDa
Gene Name:	claudin 7
Database Link:	Entrez Gene 1366 Human O95471
Background:	Claudins, such as CLDN7, are involved in the formation of tight junctions between epithelial cells. Tight junctions restrict lateral diffusion of lipids and membrane proteins, and thereby physically define the border between the apical and basolateral compartments of epithelial cells.



[View online »](#)

Synonyms: CLDN-7, CEPTRL2, CPETRL2

Product images:



Western blot analysis of extracts from 3T3 cells (Lane 2), using Claudin 7 (Phospho-Tyr210) Antibody. The lane on the left is treated with antigen-specific peptide.