

## Product datasheet for **AP55811PU-N**

### Claudin 6 (CLDN6) pTyr219 Rabbit Polyclonal Antibody

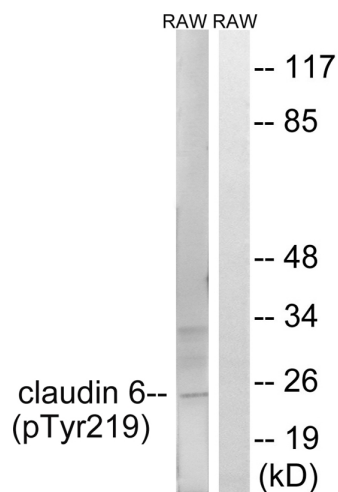
#### Product data:

Product Type:	Primary Antibodies
Applications:	WB
Recommended Dilution:	<b>Western blot:</b> 1:500~1:1000.
Reactivity:	Human, Mouse
Host:	Rabbit
Clonality:	Polyclonal
Immunogen:	Peptide sequence around phosphorylation site of tyrosine 219 (T-K-N-Y(p)-V) derived from Human Claudin 6 (KLH-conjugated)
Specificity:	The antibody detects endogenous levels of Claudin 6 only when phosphorylated at tyrosine 219.
Formulation:	Rabbit IgG in phosphate buffered saline (without Mg <sup>2+</sup> and Ca <sup>2+</sup> ), pH 7.4, 150mM NaCl, 0.02% sodium azide and 50% glycerol State: Aff - Purified State: Liquid Ig fraction
Concentration:	lot specific
Purification:	Affinity chromatography using epitope-specific peptide
Conjugation:	Unconjugated
Storage:	Upon receipt, store undiluted (in aliquots) at -20°C. Avoid repeated freezing and thawing.
Stability:	Shelf life: one year from despatch.
Predicted Protein Size:	23 kDa
Gene Name:	claudin 6
Database Link:	<a href="#">Entrez Gene 9074 Human P56747</a>
Background:	Claudin 6 Plays a major role in tight junction-specific obliteration of the intercellular space. Directly interacts with TJP1/ZO-1, TJP2/ZO-2 and TJP3/ZO- 3.
Synonyms:	Skullin, Skullin 2, UNQ757, PRO1488



[View online »](#)

Product images:



Western blot analysis of extracts from RAW264.7 cells treated with UV using Claudin 6 (Phospho-Tyr219) Antibody. The lane on the right is treated with the antigen-specific peptide.