

Product datasheet for **AP55810PU-S**

Claudin 5 (CLDN5) pTyr217 Rabbit Polyclonal Antibody

Product data:

Product Type:	Primary Antibodies
Applications:	IHC
Recommended Dilution:	Immunohistochemistry on paraffin sections: 1:50~1:100.
Reactivity:	Human, Rat
Host:	Rabbit
Clonality:	Polyclonal
Immunogen:	Peptide sequence around phosphorylation site of tyrosine 217 (K-K-N-Y(p)-V) derived from Human Claudin 5 (KLH-conjugated)
Specificity:	The antibody detects endogenous levels of Claudin 5 only when phosphorylated at tyrosine 217.
Formulation:	Rabbit IgG in phosphate buffered saline (without Mg ²⁺ and Ca ²⁺), pH 7.4, 150mM NaCl, 0.02% sodium azide and 50% glycerol State: Aff - Purified State: Liquid Ig fraction
Concentration:	lot specific
Purification:	Affinity chromatography using epitope-specific peptide
Conjugation:	Unconjugated
Storage:	Upon receipt, store undiluted (in aliquots) at -20°C. Avoid repeated freezing and thawing.
Stability:	Shelf life: one year from despatch.
Predicted Protein Size:	23 kDa
Gene Name:	claudin 5
Database Link:	Entrez Gene 7122 Human O00501



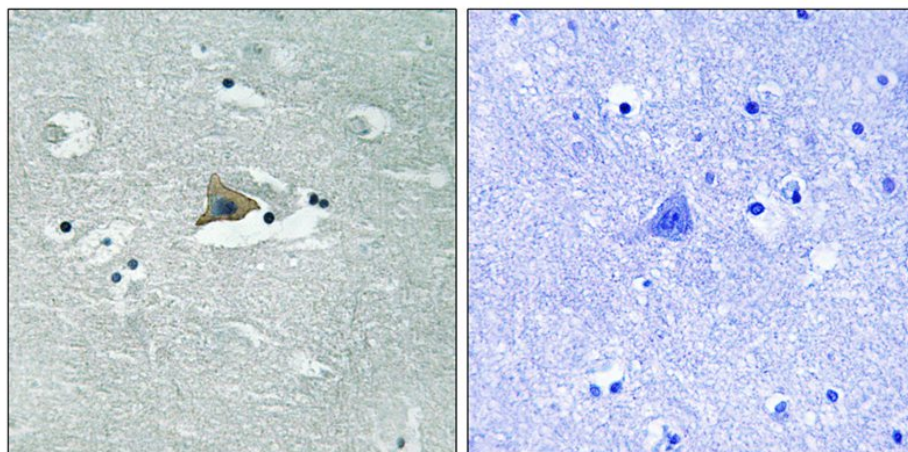
[View online »](#)

Background:

This gene encodes a member of the claudin family. Claudins are integral membrane proteins and components of tight junction strands. Tight junction strands serve as a physical barrier to prevent solutes and water from passing freely through the paracellular space between epithelial or endothelial cell sheets. Mutations in this gene have been found in patients with velocardiofacial syndrome.

Synonyms:

AWAL, TMVCF, TMDVCF, Bec1

Product images:

Immunohistochemical analysis of paraffin-embedded human brain tissue using Claudin 5 (Phospho-Tyr217) Antibody (left) or the same antibody preincubated with blocking peptide (right).