

Product datasheet for **AP55806PU-S**

CEBP Alpha (CEBPA) pThr230 Rabbit Polyclonal Antibody

Product data:

Product Type:	Primary Antibodies
Applications:	WB
Recommended Dilution:	Western blot: 1:500~1:1000.
Reactivity:	Human, Mouse, Rat
Host:	Rabbit
Clonality:	Polyclonal
Immunogen:	Peptide sequence around phosphorylation site of threonine 230 (P-P-T(p)-P-V) derived from Human C/EBP- α (KLH-conjugated)
Specificity:	The Antibody detects endogenous levels of C/EBP- α only when phosphorylated at Thr230.
Formulation:	Rabbit IgG in phosphate buffered saline (without Mg ²⁺ and Ca ²⁺), pH 7.4, 150mM NaCl, 0.02% sodium azide and 50% glycerol State: Aff - Purified State: Liquid Ig fraction
Concentration:	lot specific
Purification:	Affinity chromatography using epitope-specific peptide
Conjugation:	Unconjugated
Storage:	Upon receipt, store undiluted (in aliquots) at -20°C. Avoid repeated freezing and thawing.
Stability:	Shelf life: one year from despatch.
Predicted Protein Size:	42 kDa
Gene Name:	CCAAT/enhancer binding protein alpha
Database Link:	Entrez Gene 1050 Human P49715



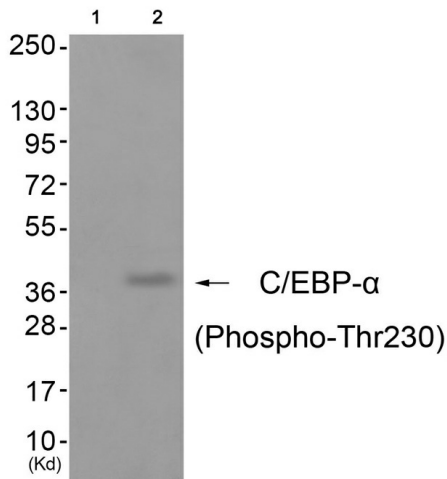
[View online »](#)

Background:

The protein encoded by this intronless gene is a bZIP transcription factor which can bind as a homodimer to certain promoters and enhancers. It can also form heterodimers with the related proteins CEBP-beta and CEBP-gamma. The encoded protein has been shown to bind to the promoter and modulate the expression of the gene encoding leptin, a protein that plays an important role in body weight homeostasis. Also, the encoded protein can interact with CDK2 and CDK4, thereby inhibiting these kinases and causing growth arrest in cultured cells.

Synonyms:

C/EBP alpha

Product images:

Western blot analysis of extracts from cos-7 cells (Lane 2), using C/EBP-a (Phospho-Thr230) Antibody. The lane on the left is treated with antigen-specific peptide.