

Product datasheet for **AP55805PU-N**

BRCA1 pSer1457 Rabbit Polyclonal Antibody

Product data:

Product Type:	Primary Antibodies
Applications:	WB
Recommended Dilution:	Western blot: 1:500~1:1000.
Reactivity:	Human
Host:	Rabbit
Clonality:	Polyclonal
Immunogen:	Peptide sequence around phosphorylation site of Serine 1457 (L-T-S(p)-Q-K) derived from Human BRCA1 (KLH-conjugated)
Specificity:	The antibody detects endogenous levels of BRCA1 only when phosphorylated at serine 1457.
Formulation:	Rabbit IgG in phosphate buffered saline (without Mg ²⁺ and Ca ²⁺), pH 7.4, 150mM NaCl, 0.02% sodium azide and 50% glycerol State: Aff - Purified State: Liquid Ig fraction
Concentration:	lot specific
Purification:	Affinity chromatography using epitope-specific peptide
Conjugation:	Unconjugated
Storage:	Upon receipt, store undiluted (in aliquots) at -20°C. Avoid repeated freezing and thawing.
Stability:	Shelf life: one year from despatch.
Predicted Protein Size:	220 kDa
Gene Name:	BRCA1, DNA repair associated
Database Link:	Entrez Gene 672 Human P38398



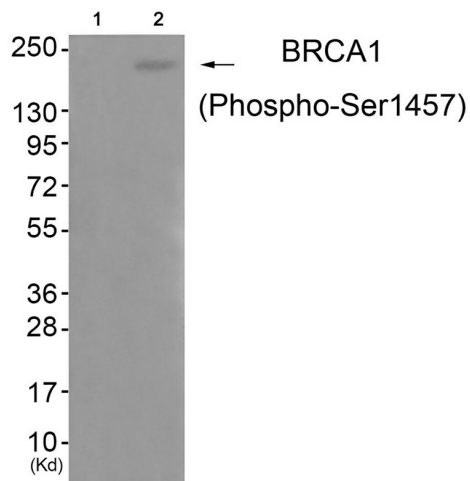
[View online »](#)

Background:

The BRCA1-BARD1 heterodimer coordinates a diverse range of cellular pathways such as DNA damage repair, ubiquitination and transcriptional regulation to maintain genomic stability. Acts by mediating ubiquitin E3 ligase activity that is required for its tumor suppressor function. Plays a central role in DNA repair by facilitating cellular response to DNA repair. Required for appropriate cell cycle arrests after ionizing irradiation in both the S-phase and the G2 phase of the cell cycle. Involved in transcriptional regulation of P21 in response to DNA damage. Required for FANCD2 targeting to sites of DNA damage. May function as a transcriptional regulator. Inhibits lipid synthesis by binding to inactive phosphorylated ACACA and preventing its dephosphorylation

Synonyms:

BRCA1; BRCC1; BROVCA1; IRIS; PSCP; RNF53

Product images:


Western blot analysis of extracts from 293 cells (Lane 2), using BRCA1 (Phospho-Ser1457) Antibody. The lane on the left is treated with antigen-specific peptide.