

## Product datasheet for **AP55804PU-N**

### **B Raf (BRAF) pThr753 Rabbit Polyclonal Antibody**

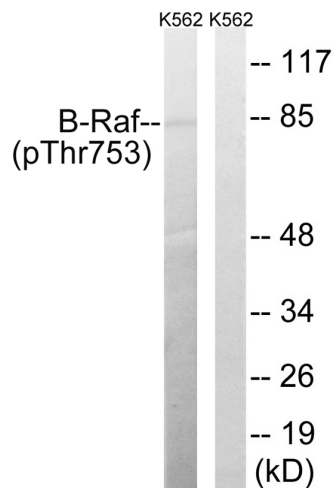
#### **Product data:**

Product Type:	Primary Antibodies
Applications:	WB
Recommended Dilution:	<b>Western blot:</b> 1:500~1:1000.
Reactivity:	Human, Mouse, Rat
Host:	Rabbit
Clonality:	Polyclonal
Immunogen:	Peptide sequence around phosphorylation site of threonine 753 (P-K-T(p)-P-L) derived from Human B-Raf (KLH-conjugated)
Specificity:	The antibody detects endogenous levels of B-Raf only when phosphorylated at threonine 753
Formulation:	Rabbit IgG in phosphate buffered saline (without Mg <sup>2+</sup> and Ca <sup>2+</sup> ), pH 7.4, 150mM NaCl, 0.02% sodium azide and 50% glycerol State: Aff - Purified State: Liquid Ig fraction
Concentration:	lot specific
Purification:	Affinity chromatography using epitope-specific peptide
Conjugation:	Unconjugated
Storage:	Upon receipt, store undiluted (in aliquots) at -20°C. Avoid repeated freezing and thawing.
Stability:	Shelf life: one year from despatch.
Predicted Protein Size:	84 kDa
Gene Name:	B-Raf proto-oncogene, serine/threonine kinase
Database Link:	<a href="#">Entrez Gene 673 Human P15056</a>
Background:	Involved in the transduction of mitogenic signals from the cell membrane to the nucleus. May play a role in the postsynaptic responses of hippocampal neuron.
Synonyms:	BRAF, BRAF1, RAFB1, p94



[View online »](#)

## Product images:



Western blot analysis of extracts from K562 cells treated with EGF using B-Raf (Phospho-Thr753) Antibody. The lane on the right is treated with the antigen-specific peptide.