

Product datasheet for **AP55802PU-S**

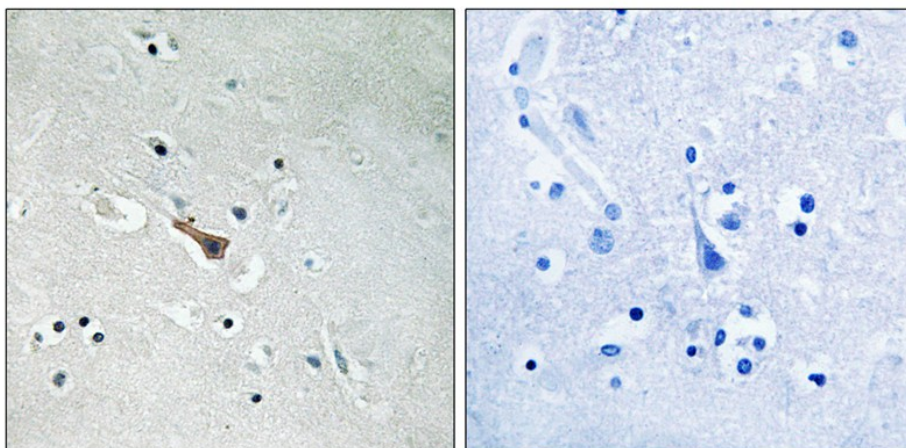
APLP2 pTyr755 Rabbit Polyclonal Antibody

Product data:

Product Type:	Primary Antibodies
Applications:	IHC
Recommended Dilution:	Immunohistochemistry on paraffin sections: 1:50~1:100 .
Reactivity:	Human, Mouse, Rat
Host:	Rabbit
Clonality:	Polyclonal
Immunogen:	Peptide sequence around phosphorylation site of tyrosine 755 (P-T-Y(p)-K-Y) derived from Human APLP2 (KLH-conjugated)
Specificity:	The antibody detects endogenous levels of APLP2 only when phosphorylated at tyrosine 755
Formulation:	Rabbit IgG in phosphate buffered saline (without Mg ²⁺ and Ca ²⁺), pH 7.4, 150mM NaCl, 0.02% sodium azide and 50% glycerol State: Aff - Purified State: Liquid Ig fraction
Concentration:	lot specific
Purification:	Affinity chromatography using epitope-specific peptide
Conjugation:	Unconjugated
Storage:	Upon receipt, store undiluted (in aliquots) at -20°C. Avoid repeated freezing and thawing.
Stability:	Shelf life: one year from despatch.
Predicted Protein Size:	86 kDa
Gene Name:	amyloid beta precursor like protein 2
Database Link:	Entrez Gene 334 Human Q06481
Background:	APLP2 May play a role in the regulation of hemostasis. The soluble form may have inhibitory properties towards coagulation factors. May interact with cellular G-protein signaling pathways. May bind to the DNA 5'-GTCACATG-3'(CDEI box).
Synonyms:	APPH, CDEI box-binding protein, CDEBP



[View online »](#)

Product images:

Immunohistochemical analysis of paraffin-embedded human brain tissue using APLP2 (Phospho-Tyr755) Antibody (left) or the same antibody preincubated with blocking peptide (right).