

Product datasheet for **AP55801PU-N**

RUNX1 pSer435 Rabbit Polyclonal Antibody

Product data:

| | |
|-------------------------|---|
| Product Type: | Primary Antibodies |
| Applications: | WB |
| Recommended Dilution: | Western blot: 1:500~1:1000. |
| Reactivity: | Human, Mouse, Rat |
| Host: | Rabbit |
| Clonality: | Polyclonal |
| Immunogen: | Peptide sequence around phosphorylation site of Serine 435(S-N-S(p)-P-T) derived from Human AML1 (KLH-conjugated) |
| Specificity: | The antibody detects endogenous levels of AML1 only when phosphorylated at serine 435. |
| Formulation: | Rabbit IgG in phosphate buffered saline (without Mg ²⁺ and Ca ²⁺), pH 7.4, 150mM NaCl, 0.02% sodium azide and 50% glycerol State: Aff - Purified State: Liquid Ig fraction |
| Concentration: | lot specific |
| Purification: | Affinity chromatography using epitope-specific peptide |
| Conjugation: | Unconjugated |
| Storage: | Upon receipt, store undiluted (in aliquots) at -20°C. Avoid repeated freezing and thawing. |
| Stability: | Shelf life: one year from despatch. |
| Predicted Protein Size: | 53 kDa |
| Gene Name: | runt related transcription factor 1 |
| Database Link: | Entrez Gene 861 Human Q01196 |



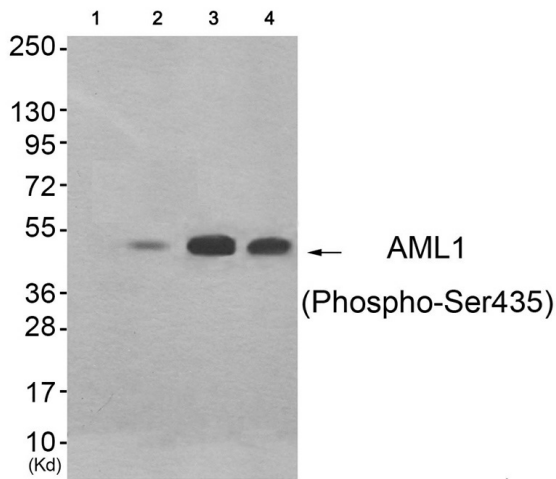
[View online »](#)

Background:

CBF binds to the core site, 5'-PYGPGGT-3', of a number of enhancers and promoters, including murine leukemia virus, polyomavirus enhancer, T-cell receptor enhancers, LCK, IL-3 and GM-CSF promoters. The alpha subunit binds DNA and appears to have a role in the development of normal hematopoiesis. Isoform AML-1L interferes with the transactivation activity of RUNX1. Acts synergistically with ELF4 to transactivate the IL-3 promoter and with ELF2 to transactivate the mouse BLK promoter. Inhibits MYST4-dependent transcriptional activation.

Synonyms:

Runt-related transcription factor, 1, AML1, AML-1, AMLCR1, Acute myeloid leukemia 1 protein, AML1-EVI-1, EVI-1, CBFA2, CBF-alpha-2, PEA2-alpha B, PEBP2-alpha B, PEBP2A2

Product images:


Western blot analysis of extracts from 293 cells (Lane 2), HeLa cells (Lane 3) and HepG2 cells (Lane 4), using AML1 (Phospho-Ser435) Antibody. The lane on the left is treated with antigen-specific peptide.