

## Product datasheet for **AP55799PU-S**

### EIF4EBP1 pThr70 Rabbit Polyclonal Antibody

#### Product data:

Product Type:	Primary Antibodies
Applications:	IHC
Recommended Dilution:	Immunohistochemistry on paraffin sections: 1:50~1:100 .
Reactivity:	Human
Host:	Rabbit
Clonality:	Polyclonal
Immunogen:	Peptide sequence around phosphorylation site of threonine70 (T-K-T(p)-P-P) derived from Human 4E-BP1 (KLH-conjugated)
Specificity:	The antibody detects endogenous levels of 4E-BP1 only when phosphorylated at threonine 70.
Formulation:	Rabbit IgG in phosphate buffered saline (without Mg <sup>2+</sup> and Ca <sup>2+</sup> ), pH 7.4, 150mM NaCl, 0.02% sodium azide and 50% glycerol State: Aff - Purified State: Liquid Ig fraction
Concentration:	lot specific
Purification:	Affinity chromatography using epitope-specific peptide
Conjugation:	Unconjugated
Storage:	Upon receipt, store undiluted (in aliquots) at -20°C. Avoid repeated freezing and thawing.
Stability:	Shelf life: one year from despatch.
Predicted Protein Size:	12 kDa
Gene Name:	eukaryotic translation initiation factor 4E binding protein 1
Database Link:	<a href="#">Entrez Gene 1978 Human Q13541</a>



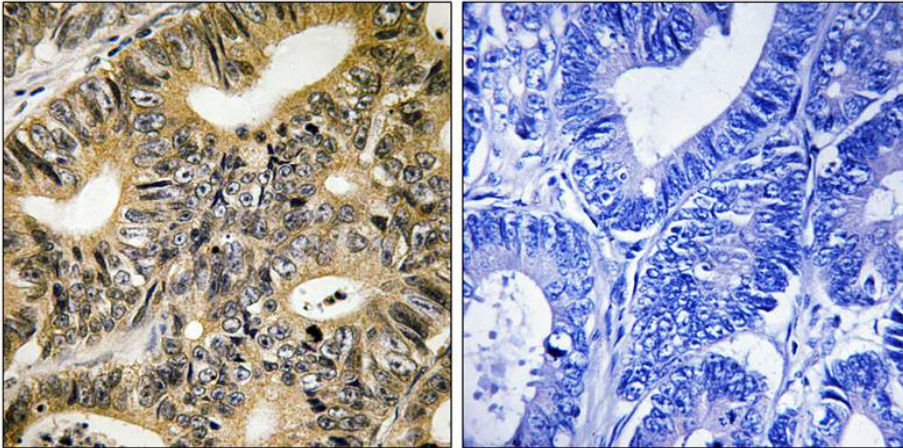
[View online »](#)

**Background:**

4E-BP1 encodes one member of a family of translation repressor proteins. The protein directly interacts with eukaryotic translation initiation factor 4E (eIF4E), which is a limiting component of the multisubunit complex that recruits 40S ribosomal subunits to the 5' end of mRNAs. Interaction of this protein with eIF4E inhibits complex assembly and represses translation. This protein is phosphorylated in response to various signals including UV irradiation and insulin signaling, resulting in its dissociation from eIF4E and activation of mRNA translation.

**Synonyms:**

PHAS-I, PHAS-1, PHAS1

**Product images:**

Immunohistochemical analysis of paraffin-embedded human colon carcinoma tissue using 4E-BP1 (Phospho-Thr70) Antibody (left) or the same antibody preincubated with blocking peptide (right).