

## Product datasheet for **AP55795PU-S**

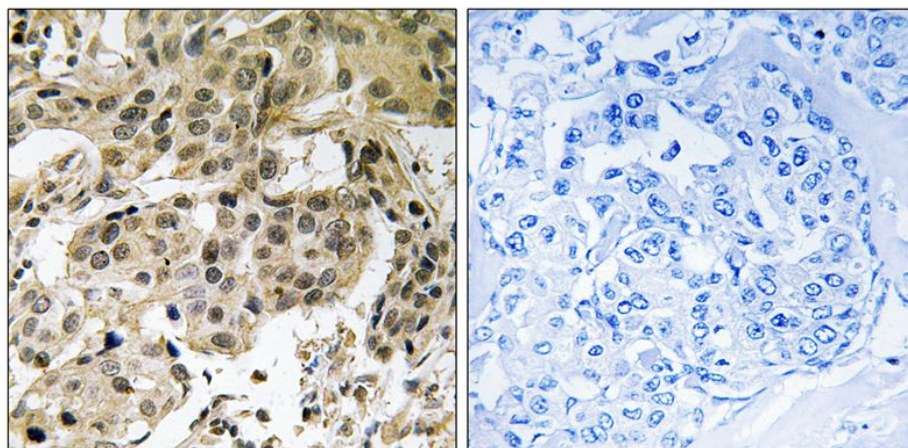
### HP1 alpha (CBX5) pSer92 Rabbit Polyclonal Antibody

#### Product data:

Product Type:	Primary Antibodies
Applications:	IHC
Recommended Dilution:	<b>Immunohistochemistry on paraffin sections:</b> 1:50~1:100 .
Reactivity:	Human
Host:	Rabbit
Clonality:	Polyclonal
Immunogen:	Peptide sequence around phosphorylation site of Serine 92(R-S-S(p)-N-F) derived from Human HP1 $\alpha$ (KLH-conjugated)
Specificity:	The antibody detects endogenous levels of HP1 $\alpha$ only when phosphorylated at serine 92.
Formulation:	Rabbit IgG in phosphate buffered saline (without Mg <sup>2+</sup> and Ca <sup>2+</sup> ), pH 7.4, 150mM NaCl, 0.02% sodium azide and 50% glycerol State: Aff - Purified State: Liquid Ig fraction
Concentration:	lot specific
Purification:	Affinity chromatography using epitope-specific peptide
Conjugation:	Unconjugated
Storage:	Upon receipt, store undiluted (in aliquots) at -20°C. Avoid repeated freezing and thawing.
Stability:	Shelf life: one year from despatch.
Predicted Protein Size:	22 kDa
Gene Name:	chromobox 5
Database Link:	<a href="#">Entrez Gene 23468 Human P45973</a>
Background:	Heterochromatin protein-1 (HP1) is a methyl-lysine binding protein localized at heterochromatin sites, where it mediates gene silencing.
Synonyms:	Chromobox protein homolog 5, HP1A, p25, HP1 alpha, HP1-alpha



[View online »](#)

**Product images:**

Immunohistochemical analysis of paraffin-embedded human breast carcinoma tissue using HP1a (Phospho-Ser92) Antibody (left) or the same antibody preincubated with blocking peptide (right).