

## Product datasheet for **AP55794PU-N**

### **PYK2 (PTK2B) pTyr579 Rabbit Polyclonal Antibody**

#### **Product data:**

Product Type:	Primary Antibodies
Applications:	IHC, WB
Recommended Dilution:	<b>Western blot:</b> 1:500~1:1000. <b>Immunohistochemistry on paraffin sections:</b> 1:50~1:100.
Reactivity:	Human, Mouse, Rat
Host:	Rabbit
Clonality:	Polyclonal
Immunogen:	Peptide sequence around phosphorylation site of tyrosine 579(E-D-Y(p)-Y-K) derived from Human PYK2 (KLH-conjugated)
Specificity:	The antibody detects endogenous levels of PYK2 only when phosphorylated at tyrosine 579.
Formulation:	Rabbit IgG in phosphate buffered saline (without Mg <sup>2+</sup> and Ca <sup>2+</sup> ), pH 7.4, 150mM NaCl, 0.02% sodium azide and 50% glycerol State: Aff - Purified State: Liquid Ig fraction
Concentration:	lot specific
Purification:	Affinity chromatography using epitope-specific peptide
Conjugation:	Unconjugated
Storage:	Upon receipt, store undiluted (in aliquots) at -20°C. Avoid repeated freezing and thawing.
Stability:	Shelf life: one year from despatch.
Predicted Protein Size:	116 kDa
Gene Name:	protein tyrosine kinase 2 beta
Database Link:	<a href="#">Entrez Gene 2185 Human Q14289</a>



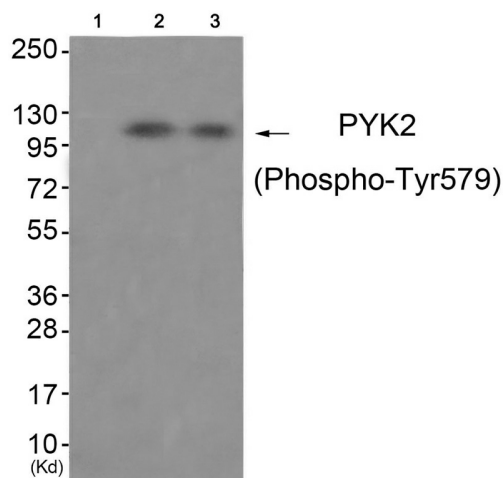
[View online »](#)

**Background:**

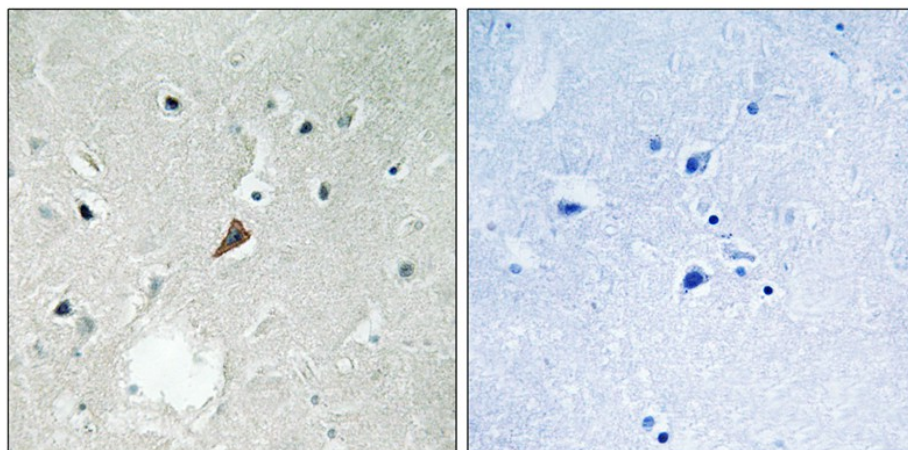
Involved in calcium induced regulation of ion channel and activation of the map kinase signaling pathway. May represent an important signaling intermediate between neuropeptide activated receptors or neurotransmitters that increase calcium flux and the downstream signals that regulate neuronal activity. Interacts with the SH2 domain of Grb2. May phosphorylate the voltage-gated potassium channel protein Kv1.2. Its activation is highly correlated with the stimulation of c-Jun N-terminal kinase activity. Involved in osmotic stress-dependent SNCA 'Tyr-125' phosphorylation.

**Synonyms:**

PYK2, RAFTK, Protein tyrosine kinase 2 beta, Focal adhesion kinase 2, CAK-beta, CADTK

**Product images:**

Western blot analysis of extracts from 3T3 cells (Lane 2) and HepG2 cells (Lane 3), using PYK2 (Phospho-Tyr579) Antibody. The lane on the left is treated with antigen-specific peptide.



Immunohistochemical analysis of paraffin-embedded human brain tissue using PYK2 (Phospho-Tyr579) antibody (left) or the same antibody preincubated with blocking peptide (right).