

Product datasheet for **AP55792PU-S**

Paxillin (PXN) pSer178 Rabbit Polyclonal Antibody

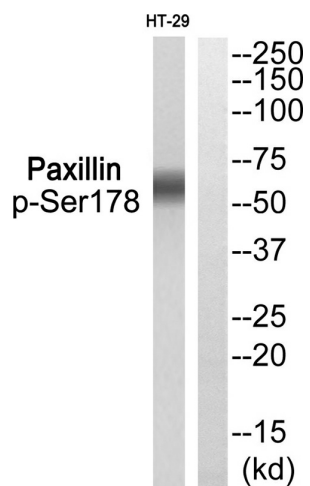
Product data:

| | |
|-------------------------|---|
| Product Type: | Primary Antibodies |
| Applications: | WB |
| Recommended Dilution: | Western blot: 1:500~1:1000. |
| Reactivity: | Human, Mouse, Rat |
| Host: | Rabbit |
| Clonality: | Polyclonal |
| Immunogen: | Peptide sequence around phosphorylation site of Serine 178(A-L-S(p)-P-L) derived from Human Paxillin (KLH-conjugated) |
| Specificity: | The Antibody detects endogenous levels of Paxillin only when phosphorylated at Ser178. |
| Formulation: | Rabbit IgG in phosphate buffered saline (without Mg ²⁺ and Ca ²⁺), pH 7.4, 150mM NaCl, 0.02% sodium azide and 50% glycerol State: Aff - Purified State: Liquid Ig fraction |
| Concentration: | lot specific |
| Purification: | Affinity chromatography using epitope-specific peptide |
| Conjugation: | Unconjugated |
| Storage: | Upon receipt, store undiluted (in aliquots) at -20°C. Avoid repeated freezing and thawing. |
| Stability: | Shelf life: one year from despatch. |
| Predicted Protein Size: | 60 kDa |
| Gene Name: | paxillin |
| Database Link: | Entrez Gene 5829 Human P49023 |
| Background: | Cytoskeletal protein involved in actin-membrane attachment at sites of cell adhesion to the extracellular matrix (focal adhesion). |
| Synonyms: | FLJ16691 |



[View online »](#)

Product images:



Western blot analysis of extracts from HT-29 using Paxillin (Phospho-Ser178) Antibody. The lane on the right is treated with the antigen-specific peptide.