

## Product datasheet for **AP55792PU-N**

### Paxillin (PXN) pSer178 Rabbit Polyclonal Antibody

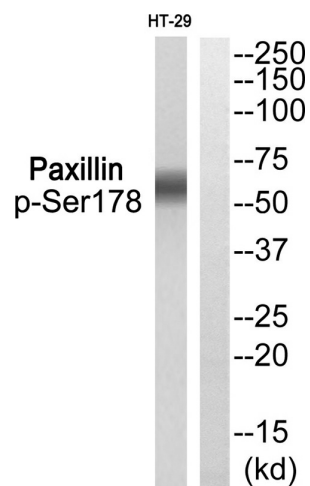
#### Product data:

Product Type:	Primary Antibodies
Applications:	WB
Recommended Dilution:	<b>Western blot:</b> 1:500~1:1000.
Reactivity:	Human, Mouse, Rat
Host:	Rabbit
Clonality:	Polyclonal
Immunogen:	Peptide sequence around phosphorylation site of Serine 178(A-L-S(p)-P-L) derived from Human Paxillin (KLH-conjugated)
Specificity:	The Antibody detects endogenous levels of Paxillin only when phosphorylated at Ser178.
Formulation:	Rabbit IgG in phosphate buffered saline (without Mg <sup>2+</sup> and Ca <sup>2+</sup> ), pH 7.4, 150mM NaCl, 0.02% sodium azide and 50% glycerol State: Aff - Purified State: Liquid Ig fraction
Concentration:	lot specific
Purification:	Affinity chromatography using epitope-specific peptide
Conjugation:	Unconjugated
Storage:	Upon receipt, store undiluted (in aliquots) at -20°C. Avoid repeated freezing and thawing.
Stability:	Shelf life: one year from despatch.
Predicted Protein Size:	60 kDa
Gene Name:	paxillin
Database Link:	<a href="#">Entrez Gene 5829 Human P49023</a>
Background:	Cytoskeletal protein involved in actin-membrane attachment at sites of cell adhesion to the extracellular matrix (focal adhesion).
Synonyms:	FLJ16691



[View online »](#)

## Product images:



Western blot analysis of extracts from HT-29 using Paxillin (Phospho-Ser178) Antibody. The lane on the right is treated with the antigen-specific peptide.