

## Product datasheet for **AP55791PU-N**

### FGFR1 pTyr463/466 Rabbit Polyclonal Antibody

#### Product data:

Product Type:	Primary Antibodies
Applications:	WB
Recommended Dilution:	Western blot: 1:500~1:1000.
Reactivity:	Human, Mouse
Host:	Rabbit
Clonality:	Polyclonal
Immunogen:	Peptide sequence around phosphorylation site of tyrosine 463/466(S-E-Y(p)-E-L) derived from Human FGFR1/2 (KLH-conjugated)
Specificity:	The antibody detects endogenous levels of FGFR1/2 only when phosphorylated at tyrosine 463/466.
Formulation:	Rabbit IgG in phosphate buffered saline (without Mg <sup>2+</sup> and Ca <sup>2+</sup> ), pH 7.4, 150mM NaCl, 0.02% sodium azide and 50% glycerol State: Aff - Purified State: Liquid Ig fraction
Concentration:	lot specific
Purification:	Affinity chromatography using epitope-specific peptide
Conjugation:	Unconjugated
Storage:	Upon receipt, store undiluted (in aliquots) at -20°C. Avoid repeated freezing and thawing.
Stability:	Shelf life: one year from despatch.
Predicted Protein Size:	91 kDa
Gene Name:	fibroblast growth factor receptor 1
Database Link:	<a href="#">Entrez Gene 2260 Human P11362</a>



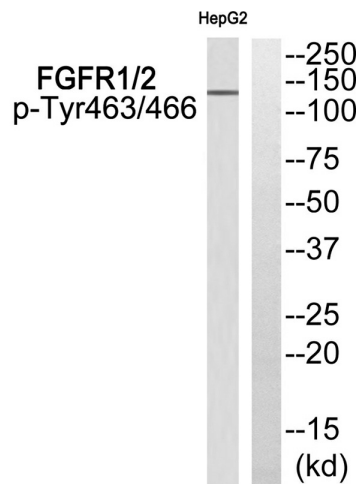
[View online »](#)

**Background:**

The protein encoded by this gene is a member of the fibroblast growth factor receptor family, where amino acid sequence is highly conserved between members and throughout evolution. FGFR family members differ from one another in their ligand affinities and tissue distribution. A full-length representative protein consists of an extracellular region, composed of three immunoglobulin-like domains, a single hydrophobic membrane-spanning segment and a cytoplasmic tyrosine kinase domain. The extracellular portion of the protein interacts with fibroblast growth factors, setting in motion a cascade of downstream signals, ultimately influencing mitogenesis and differentiation.

**Synonyms:**

BFGFR, CEK, FGFBR, FLG, FLT2, HBGFR, BFGFR, bFGF-R-1, FLT-2, N-sam, Proto-oncogene c-Fgr, CD332, FGFR-2

**Product images:**


Western blot analysis of extracts from HepG2 cells using FGFR1/2 (Phospho-Tyr463/466) Antibody. The lane on the right is treated with the antigen-specific peptide.