

## Product datasheet for **AP55790PU-N**

### **GAB2 pSer159 Rabbit Polyclonal Antibody**

#### **Product data:**

Product Type:	Primary Antibodies
Applications:	WB
Recommended Dilution:	<b>Western blot:</b> 1:500~1:1000.
Reactivity:	Human, Mouse, Rat
Host:	Rabbit
Clonality:	Polyclonal
Immunogen:	Peptide sequence around phosphorylation site of Serine 159(K-S-S(p)-A-P) derived from Human GRB2 (KLH-conjugated)
Specificity:	The antibody detects endogenous levels of GRB2 only when phosphorylated at serine 159.
Formulation:	Rabbit IgG in phosphate buffered saline (without Mg <sup>2+</sup> and Ca <sup>2+</sup> ), pH 7.4, 150mM NaCl, 0.02% sodium azide and 50% glycerol State: Aff - Purified State: Liquid Ig fraction
Concentration:	lot specific
Purification:	Affinity chromatography using epitope-specific peptide
Conjugation:	Unconjugated
Storage:	Upon receipt, store undiluted (in aliquots) at -20°C. Avoid repeated freezing and thawing.
Stability:	Shelf life: one year from despatch.
Predicted Protein Size:	100 kDa
Gene Name:	GRB2 associated binding protein 2
Database Link:	<a href="#">Entrez Gene 9846 Human Q9UQC2</a>



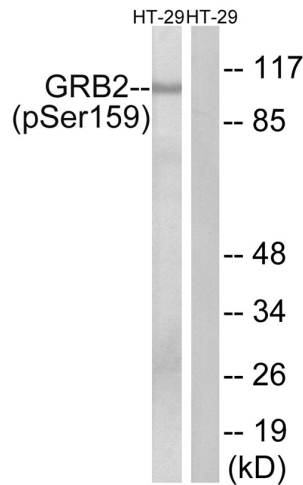
[View online »](#)

**Background:**

This gene is a member of the GRB2-associated binding protein (GAB) gene family and is similar to the GAB1 gene. These proteins contain pleckstrin homology (PH) domain, and bind SHP2 tyrosine phosphatase and GRB2 adapter protein. They act as adapters for transmitting various signals in response to stimuli through cytokine and growth factor receptors, and T- and B-cell antigen receptors. The protein encoded by this gene is the principal activator of phosphatidylinositol-3 kinase in response to activation of the high affinity IgE receptor. Two alternatively spliced transcripts encoding different isoforms have been described for this gene.

**Synonyms:**

GRB2-associated-binding protein 2, KIAA0571, pp100

**Product images:**


Western blot analysis of extracts from HT-29 cells treated with serum using GRB2 (Phospho-Ser159) Antibody. The lane on the right is treated with the antigen-specific peptide.