

Product datasheet for **AP55789PU-S**

MCK10 (DDR1) pTyr513 Rabbit Polyclonal Antibody

Product data:

Product Type:	Primary Antibodies
Applications:	IHC, WB
Recommended Dilution:	Western blot: 1:500~1:1000. Immunohistochemistry on paraffin sections: 1:50~1:100.
Reactivity:	Human, Mouse, Rat
Host:	Rabbit
Clonality:	Polyclonal
Immunogen:	Peptide sequence around phosphorylation site of tyrosine 513 (K-K-Y(p)-V-R) derived from Human DDR1 (KLH-conjugated)
Specificity:	The antibody detects endogenous levels of DDR1 only when phosphorylated at tyrosine 513.
Formulation:	Rabbit IgG in phosphate buffered saline (without Mg ²⁺ and Ca ²⁺), pH 7.4, 150mM NaCl, 0.02% sodium azide and 50% glycerol State: Aff - Purified State: Liquid Ig fraction
Concentration:	lot specific
Purification:	Affinity chromatography using epitope-specific peptide
Conjugation:	Unconjugated
Storage:	Upon receipt, store undiluted (in aliquots) at -20°C. Avoid repeated freezing and thawing.
Stability:	Shelf life: one year from despatch.
Predicted Protein Size:	110 kDa
Gene Name:	discoidin domain receptor tyrosine kinase 1
Database Link:	Entrez Gene 780 Human Q08345



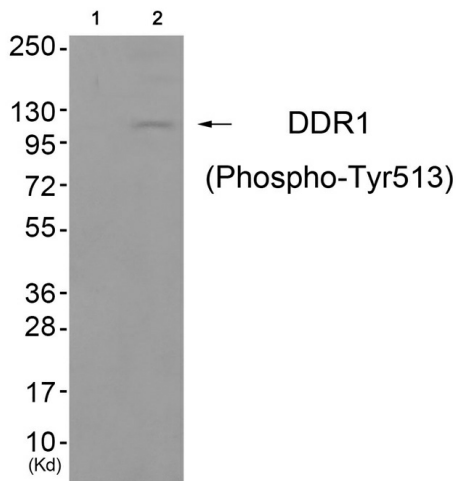
[View online »](#)

Background:

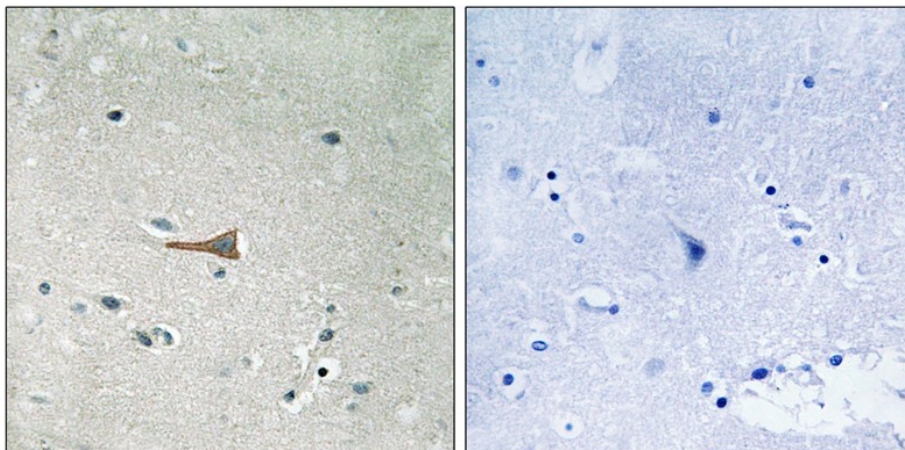
Receptor tyrosine kinases (RTKs) play a key role in the communication of cells with their microenvironment. These molecules are involved in the regulation of cell growth, differentiation and metabolism. The protein encoded by this gene is a RTK that is widely expressed in normal and transformed epithelial cells and is activated by various types of collagen. This protein belongs to a subfamily of tyrosine kinase receptors with a homology region to the Dictyostelium discoideum protein discoidin I in their extracellular domain. Its autophosphorylation is achieved by all collagens so far tested (type I to type VI).

Synonyms:

Tyrosine kinase DDR-1, CAK, EDDR1, NEP, NTRK4, PTK3A, RTK6, TRKE, MCK10, Epithelial discoidin domain receptor 1

Product images:

Western blot analysis of extracts from JK cells (Lane 2), using DDR1 (Phospho-Tyr513) Antibody. The lane on the left is treated with antigen-specific peptide.



Immunohistochemical analysis of paraffin-embedded human brain tissue using DDR1 (Phospho-Tyr513) Antibody (left) or the same antibody preincubated with blocking peptide (right).