

## Product datasheet for **AP55786PU-N**

### GJA1 pSer265 Rabbit Polyclonal Antibody

#### Product data:

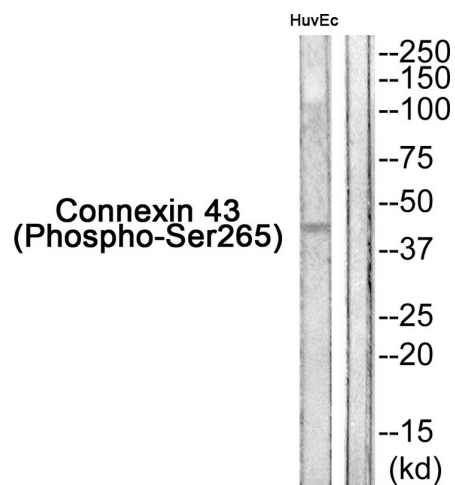
Product Type:	Primary Antibodies
Applications:	WB
Recommended Dilution:	<b>Western blot:</b> 1:500~1:1000.
Reactivity:	Human, Mouse, Rat
Host:	Rabbit
Clonality:	Polyclonal
Immunogen:	Peptide sequence around phosphorylation site of Serine 265(Q-K-Y(p)-A-Y) derived from Human Connexin 43 (KLH-conjugated)
Specificity:	Connexin 43 antibody detects endogenous levels of Connexin 43 only when phosphorylated at Serine 265
Formulation:	Rabbit IgG in phosphate buffered saline (without Mg <sup>2+</sup> and Ca <sup>2+</sup> ), pH 7.4, 150mM NaCl, 0.02% sodium azide and 50% glycerol State: Aff - Purified State: Liquid Ig fraction
Concentration:	lot specific
Purification:	Affinity chromatography using epitope-specific peptide
Conjugation:	Unconjugated
Storage:	Upon receipt, store undiluted (in aliquots) at -20°C. Avoid repeated freezing and thawing.
Stability:	Shelf life: one year from despatch.
Predicted Protein Size:	43 kDa
Gene Name:	gap junction protein alpha 1
Database Link:	<a href="#">Entrez Gene 2697 Human P17302</a>
Background:	One gap junction consists of a cluster of closely packed pairs of transmembrane channels, the connexons, through which materials of low MW diffuse from one cell to a neighboring cell. May play a critical role in the physiology of hearing by participating in the recycling of potassium to the cochlear endolymph.



[View online »](#)

Synonyms: Gap junction alpha-1 protein, Connexin-43, GJAL

**Product images:**



Western blot analysis of extracts from HuvEc cells using Connexin 43 (Phospho-Ser265) Antibody. The lane on the right is treated with the antigen-specific peptide.