

## Product datasheet for **AP55784PU-N**

### CD22 pTyr807 Rabbit Polyclonal Antibody

#### Product data:

Product Type:	Primary Antibodies
Applications:	WB
Recommended Dilution:	Western blot: 1:500~1:1000.
Reactivity:	Human
Host:	Rabbit
Clonality:	Polyclonal
Immunogen:	Peptide sequence around phosphorylation site of tyrosine 807 (G-D-Y(p)-E-N) derived from Human BL-CAM (KLH-conjugated)
Specificity:	The antibody detects endogenous levels of BL-CAM only when phosphorylated at tyrosine 807.
Formulation:	Rabbit IgG in phosphate buffered saline (without Mg <sup>2+</sup> and Ca <sup>2+</sup> ), pH 7.4, 150mM NaCl, 0.02% sodium azide and 50% glycerol State: Aff - Purified State: Liquid Ig fraction
Concentration:	lot specific
Purification:	Affinity chromatography using epitope-specific peptide
Conjugation:	Unconjugated
Storage:	Upon receipt, store undiluted (in aliquots) at -20°C. Avoid repeated freezing and thawing.
Stability:	Shelf life: one year from despatch.
Predicted Protein Size:	95 kDa
Gene Name:	CD22 molecule
Database Link:	<a href="#">Entrez Gene 933 Human P20273</a>



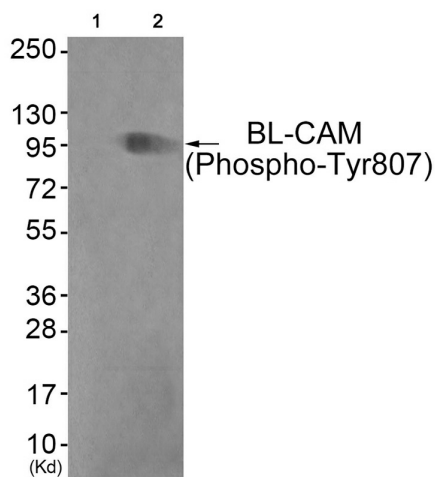
[View online »](#)

**Background:**

Mediates B-cell B-cell interactions. May be involved in the localization of B-cells in lymphoid tissues. Binds sialylated glycoproteins; one of which is CD45. Preferentially binds to alpha2,6-linked sialic acid. The sialic acid recognition site can be masked by cis interactions with sialic acids on the same cell surface. Upon ligand induced tyrosine phosphorylation in the immune response seems to be involved in regulation of B cell antigen receptor signaling. Plays a role in positive regulation through interaction with Src family tyrosine kinases and may also act as an inhibitory receptor by recruiting cytoplasmic phosphatases via their SH2 domains that block signal transduction through dephosphorylation of signaling molecules.

**Synonyms:**

SIGLEC2, Siglec-2, B-cell receptor CD22, Leu-14, BL-CAM

**Product images:**

Western blot analysis of extracts from COS7 cells (Lane 2), using BL-CAM (Phospho-Tyr807) Antibody. The lane on the left is treated with antigen-specific peptide.